

AGALYCHNIS CALLIDRYAS DEVELOPMENTAL STAGES (GOSNER 1960, PYBURN 1963)

KAREN M. WARKENTIN, BOSTON UNIVERSITY
(SITES.BU.EDU/WARKENTINLAB)

GS 6-7. IRREGULAR EARLY CLEAVAGE (0 D, MORNING)



7:30 0 d



19:00 0 d

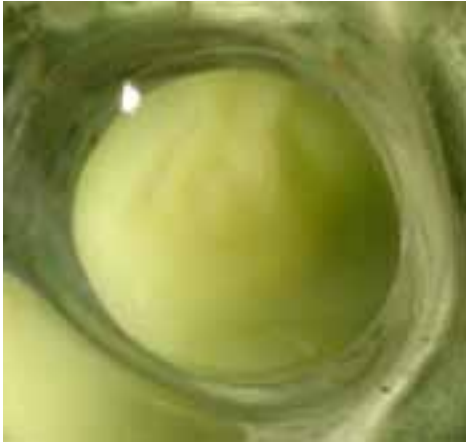
GS 8-9. MID TO LATE CLEAVAGE (0 D)



GS 12. YOLK PLUG (1 D, MORNING)

7:30 1 d

(1 D, MIDDAY)



13:30, 1 d

GS 13. NEURAL PLATE
Dorsal flattening.



12:30, 1 d

GS 14. NEURAL FOLDS



14:30, 1 d

GS 15. CILIARY CURRENT
Neural folds closer, body elongates.



14:30, 1 d

GS 16. NEURAL TUBE Neural folds closed, gill plates distinct.



22:00, 1 d

GS 17. TAIL BUD (1 D, EVENING)
Optical protruberances, body axis straight.



13:45 2 d

GS 18. MUSCULAR RESPONSE (2 D)
Embryo arched sideways.



13:45 2 d

GS 19. HEART BEAT (2 D)
Anterior gills hooked, posterior gills nubbs.



14:00 2 d



18:30 2 d

GS 20. GILL CIRCULATION (2 D)

Gill arches extended, short branches present, scattered melanophores on head, body and tail musculature, tail fins translucent, blood pale.



8:30 3 d

**GS 21.
CORNEA TRANSPARENT
(3 D)**

Gills elongated, melanophores on tail fins and halfway down belly. Melanophores on iris, circle not complete, lens cloudy. No pigmentation over heart. Blood pale red.



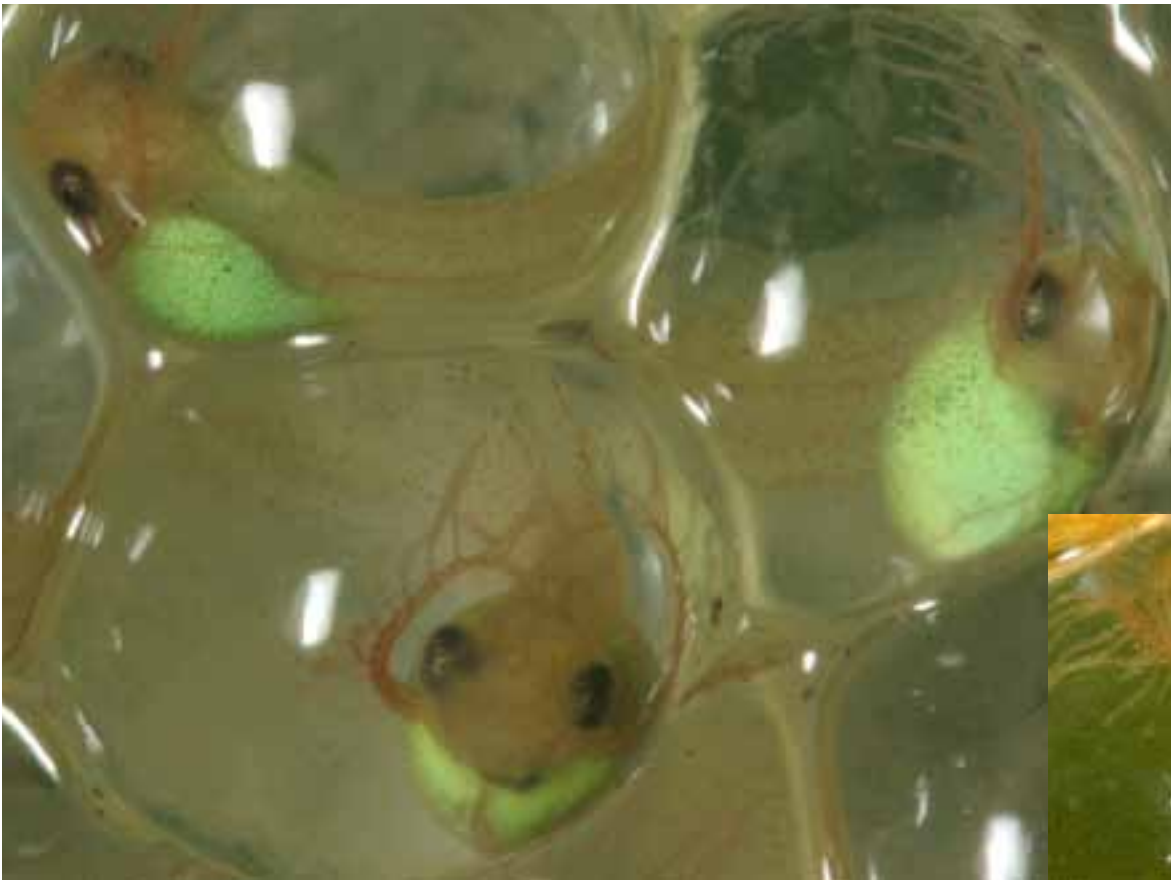
19:00 3 d



19:00 3 d

**GS 22.
TAIL FIN CIRCULATION
(3 D)**

Scattered melanophores across venter at heart level, iris dark, blood red.



10:00 4 d



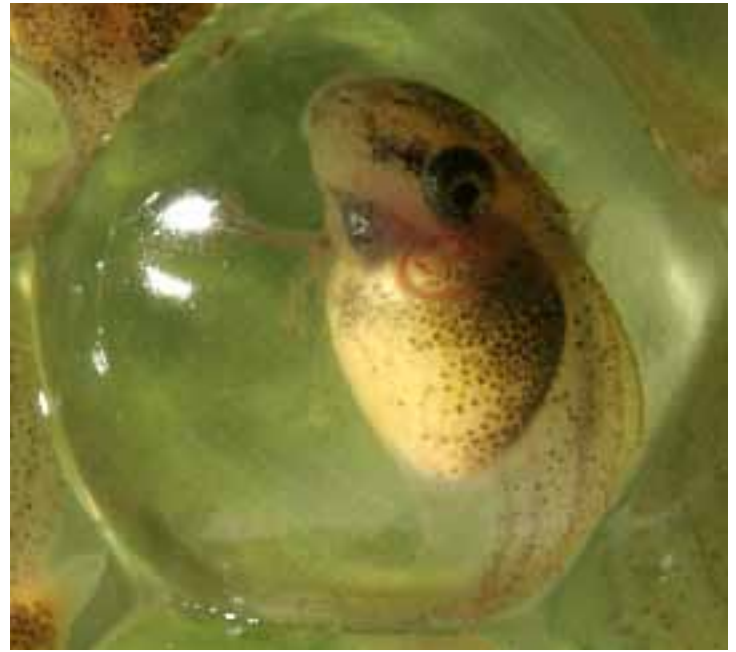
11:00 4 d

GS 23. OPERCULUM FORMED (4 D)

Scattered melanophores on sides and belly, melanophores and a few iridophores over heart and in iris, conspicuous blood vessels in yolk sac, yolk sac rounded.

8:30 4 d





11:00 5 d

GS 23. OPERCULUM FORMED (5 D)

Melanophores on sides & across belly, melanophores & dense iridophores over heart and in iris, yolk sac streamlined but undivided with blood vessels inconspicuous, some keratinization of beaks.



01:00 6 d

GS 23. OPERCULUM FORMED (6 D)

Gut coils forming.