



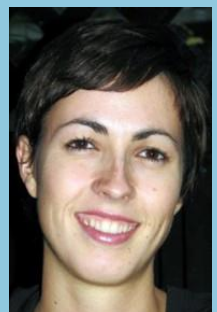
Julian Adong, MBChB
 Medical Officer, MMed Candidate
 Mbarara University of Science and Technology
 ARCH Mentor: Hahn

ARCH Cohort Project: Social desirability and reported alcohol use among persons living with HIV in Uganda
Background/Training: MBChB, currently enrolled for MMed degree at Mbarara University of Science and Technology in Mbarara, Uganda
Research Interest: Substance use and HIV in the African context
Funding: International trainee in AIDS Prevention Studies Manuscript Writing Program, HIV Research Trust Scholarship Award



Stephen Asimwe, MMed, MBChB
 Clinical Research Fellow, Epidemiology and Biostatistics
 University of California San Francisco
 ARCH Mentor: Hahn

ARCH Cohort Project: Alcohol types and association with clinical outcomes among HIV-infected drinkers
Background/Training: MBChB from Makerere University, MMed (Internal Medicine) from Mbarara University of Science and Technology, Current Fellowship in Epidemiology and Biostatistics at UCSF
Research Interest: Measurement of alcohol consumption, interventions for alcohol use disorders



Nadia Fairbairn, MD
 Assistant Professor, Research Scientist
 University of British Columbia
 ARCH Mentor: Walley

ARCH Cohort Project: Mortality in HIV-infected alcohol and drug users in St. Petersburg, Russia
Background/Training: MD from the University of Ottawa, completed Fellowship in General Internal Medicine at the University of British Columbia, and the Goldcorp Addiction Medicine Fellowship at St. Paul's Hospital in Vancouver, Canada
Research Interest: Alcohol use in the context of people who inject drugs, the interaction and contribution of alcohol use, substance use, and HIV in people with addictions
Funding: Canadian Institute of Health Research



Bulat Idrisov, MD, MSc
 Assistant Professor
 Bashkir State Medical University
 ARCH Mentor: Samet & Lunze

ARCH Cohort Project: 1) Food insecurity and HIV outcomes, 2) Opioid craving, substance use and HIV care cascade
Background/Training: MD from Bashkir State Medical University in Ufa, Russia, MS in Global Health Policy and Management from Heller School, Brandeis University (Fulbright Award)
Research Interest: Within HIV and substance use: digital health, craving, care cascade
Funding: NIDA INVEST



Seonaid Nolan, MBBCh, FRCPC
 Clinical Assistant Professor
 University of British Columbia
 ARCH Mentor: Walley & Saitz

ARCH Cohort Project: HIV-infected individuals who use alcohol and other drugs, and virologic suppression
Background/Training: MBBCh from the Royal College of Surgeons in Ireland, completed clinical fellowship in General Internal & Addiction Medicine and research fellowships with Canada Addiction Medicine Research Fellowship & Research in Addiction Medicine Scholar (RAMS) Program
Research Interest: Injection drug users with HIV, intersection of addiction and acute care services
Funding: Michael Smith Foundation for Health Research
 Health Professional Investigator



Sabrina Assoumou, MD, MPH
 Assistant Professor of Medicine
 Boston University School of Medicine
 ARCH Mentor: Samet

ARCH Cohort Project: Integrating HIV and HCV testing at a detoxification center

Background/Training: MD from the University of Rochester School of Medicine and Dentistry, Combined Internal Medicine/Pediatrics Residency at Brown University/Rhode Island Hospital, Infectious Diseases Fellowship at Beth Israel Deaconess Medical Center/Harvard University, MPH from Harvard TH Chan School of Public Health

Research Interest: Medical complications of substance use including HIV and HCV; Models of care for HIV and/or HCV-infected individuals

Funding: Providence/Boston CFAR Developmental Award (P30AI042853), R25 DA035163



Joshua Barocas, MD
 Assistant in Medicine, Massachusetts General Hospital; Instructor of Medicine, Harvard Medical School
 ARCH Mentor: Samet

ARCH Cohort Project: Zinc deficiency and liver fibrosis among HIV/HCV co-infected persons in Russia

Background/Training: BA from Washington University in St. Louis (2003), MD from the George Washington University School of Medicine and Public Health (2010), completed a residency and chief residency in Internal Medicine at the University of Wisconsin-Madison (2010-2014), and completed an Infectious Diseases Fellowship at Massachusetts General Hospital and Brigham and Women's Hospital

Research Interest: Use of simulation modeling for comparative- and cost-effectiveness of interventions to identify and treat infectious diseases that arise from substance use disorders

Funding: NIAID T32AI052074; MGH ECOR Fund for Medical Discovery Award; NIDA R25DA037190



Angela Bazzi, PhD, MPH
 Assistant Professor
 Boston University School of Public Health
 ARCH Mentor: Saitz & Drainoni

ARCH Cohort Project: Implementing pre-exposure prophylaxis for HIV prevention among people who inject drugs

Background/Training: PhD in Global Health from the University of California San Diego, Post-Doc Fellowship in Epidemiology at the Harvard TH Chan School of Public Health

Research Interest: Social epidemiology, HIV/STI transmission, risk behaviors, prevention interventions, couples-based research, women's health, pre-exposure prophylaxis, injection drug use

Funding: K01DA043412, Providence/Boston CFAR Developmental Award (P30AI042853)



Margo Godersky, MPH
 Research Coordinator
 University of Washington, Harborview Medical Center
 ARCH Mentor: Saitz

ARCH Cohort Project: Self-medication with alcohol and other drugs by people with HIV infection and substance use disorder
Background/Training: Research Assistant with the Boston ARCH cohort for several years, conducted a study using Boston ARCH data to look at self-medication with substances for MPH practicum, currently coordinating a study with Dr. Judy Tsui in Seattle at the University of Washington piloting a mobile phone application to increase adherence to buprenorphine treatment
Research Interest: Social determinants of health, access and inclusion of under-served populations and innovative solutions to the complex problems of substance use disorders



Sara Lorkiewicz, MS
 2nd Year PhD Clinical Neuropsychology Graduate Student
 Palo Alto University
 ARCH Mentor: Saitz

ARCH Cohort Project: Marijuana use, heavy drinking, and cognitive dysfunction in people with HIV infection
Background/Training: MS in Medical Sciences from Boston University School of Medicine; BS in Psychology and Molecular Biology from Loyola University Chicago
Research Interest: Substance use and cognition



Rana Mokhtar, PhD, MPH, MA
 Postdoctoral Scholar
 Boston University School of Medicine
 ARCH Mentor: Saitz & Holick

ARCH Cohort Project: The effect of alcohol use on bone micro-architecture among HIV-infected subjects
Background/Training: PhD from Boston University School of Medicine, MPH from Boston University School of Public Health, MA from Boston University School of Medicine
Research Interest: Vitamin D, calcium, bone health, undernutrition and growth among children, pregnancy and nutrition, HIV and alcohol use on bone health markers, vulnerable populations
Funding: The Danish Dairy Research Foundation (MFF), Sight and Life Foundation Development Award



Akila Raja, MS
 DO Candidate
 Philadelphia College of Osteopathic Medicine – Georgia Campus
 ARCH Mentor: Saitz

ARCH Cohort Project: Food insecurity and substance use in people with HIV and substance use disorders
Background/Training: BS from University of Florida, MS from Boston University School of Medicine, Current DO Candidate at Philadelphia College of Osteopathic Medicine – Georgia Campus
Research Interest: Substance use disorders, HIV, health education, advocacy, awareness



Kaku So-Armah, PhD
 Research Assistant Professor
 Boston University School of Medicine
 ARCH Mentor: Samet

ARCH Cohort Project: Novel mechanisms driving excess atherosclerotic cardiovascular disease risk in the context of HIV: The role of liver injury
Background/Training: PhD in Epidemiology from the University of Pittsburgh Graduate School of Public Health
Research Interest: Alcohol use and immune dysfunction in the context of HIV, liver and cardiovascular diseases
Funding: K01HL134147, Providence/Boston CFAR Developmental Award (P30AI042853)



Kinna Thakarar, DO, MPH
 Assistant Professor
 Maine Medical Center/Tufts School of Medicine
 ARCH Mentor: Walley & Hahn

ARCH Cohort Project: 1) Medication for addiction treatment and acute care utilization among HIV positive adults with substance dependence, 2) Alcohol consumption in Ugandan HIV-infected household-brewers versus non-brewers
Background/Training: DO from Philadelphia College of Osteopathic Medicine, Infectious Disease Fellowship at BMC, Internal Medicine residency at Cambridge Health Alliance, MPH from John Hopkins School of Public Health
Research Interest: Health service utilization in HIV/Hepatitis C patients with substance use, epidemiology of HIV and substance use disorders in Uganda



Jennifer Wagman, PhD, MHS
 Assistant Professor
 UC San Diego School of Medicine
 ARCH Mentor: Samet & Hahn

ARCH Cohort Project: 1) Gender differences among PWID with regards to HIV transmission risk in St. Petersburg, Russia, 2) Alcohol epidemiology and pilot intervention to reduce alcohol, IPV, and HIV in women in Uganda
Background/Training: MHS in International Health and PhD in Reproductive Health from Johns Hopkins School of Public Health, Post-Doctoral Training in Substance Use, HIV, and Related Infections from UCSD
Research Interest: How harmful consumption of alcohol increases risk for intimate partner violence, HIV risk behaviors, and HIV infection in women
Funding: K01AA024068



Sarah Woolf-King, PhD, MPH
 Assistant Professor
 Syracuse University
 ARCH Mentor: Hahn

ARCH Cohort Project: Project on alcohol and intimate relationships (PAIR)
Background/Training: PhD in Clinical Psychology from Syracuse University, MPH in Epidemiology from UC Berkeley, Intern in Behavioral Medicine at VA Palo Alto, Post-Doctoral Fellowship at the University of California San Francisco
Research Interest: Innovative methods to investigate the causal and temporal relationship between alcohol and sexual risk among HIV-infected adults
Funding: K01AA021671