



Alzheimer's Dementia Among Individuals With Down Syndrome



Photo by Robina Weermeijer on Unsplash)

[Learn more about our research
paper here](#)

Why is it important?

Alzheimer's dementia is a health condition that affects the brain as people get older. People with Alzheimer's dementia lose their memory, get confused, and have difficulty with daily tasks.



People with Down syndrome are more likely to have **Alzheimer's dementia** than people without Down syndrome.



There are not many studies about Alzheimer's dementia, race, age, and death in adults with Down syndrome across the whole United States.

Our Study: what we did

We wanted to understand Alzheimer's dementia for people with Down syndrome.

We looked at **Medicare and Medicaid** data in the United States from 2011 to 2019. In those data, we found 132,700 adults with Down syndrome.



Medicare and Medicaid:
Government programs that help people pay for health care.



Designed by Freepik

These programs help disabled people, people who don't make a lot of money, and older people.

Our Study: what we did



Designed by [Freepik](#)



We studied Medicare and Medicaid records of people with Down syndrome to look at Alzheimer's dementia.

We looked at race or ethnicity, including Asian or Pacific Islander, Black, Hispanic, Native American, white, or mixed race.



We also checked their ages and how old they were when they died.

We did not include people with Down syndrome who were younger than 35 years old because they usually do not have Alzheimer's dementia.

What we found

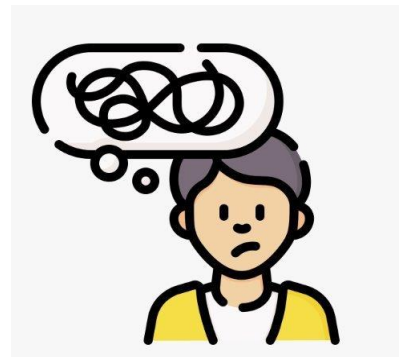
13% of adults with Down syndrome had Alzheimer's dementia.



Designed by Freepik

Age

On average, people with Down syndrome were around 54.5 years old when Alzheimer's dementia was first discovered.

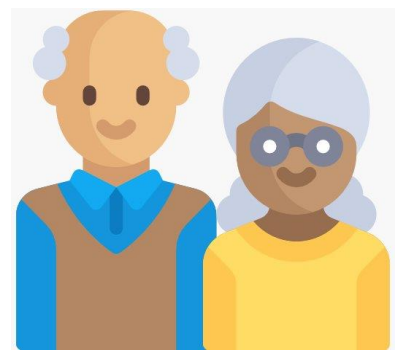


Designed by Freepik

The average age at death was around 59.2 years old.

Race/ethnicity

Alzheimer's dementia was discovered earlier for those who are not white.



Designed by Freepik

Sex

There were no differences between men and women.



Designed by Freepik

Conclusion

Alzheimer's dementia affects those with Down syndrome. As they get older, it is more common to get Alzheimer's dementia.

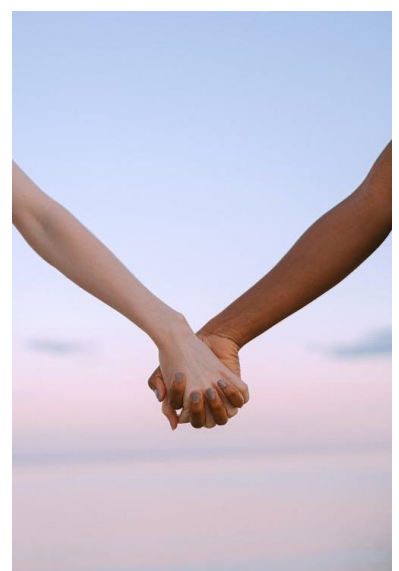


We used Medicare and Medicaid data to look at differences in various groups of people with Down syndrome.



Designed by [Freepik](#)

This study supports using data from Medicare and Medicaid for research about Down syndrome Alzheimer's dementia because it is similar to clinical studies.



"Photo of People's Hands" by Anna Shvets, used under the Pexels License.

Article Title: Alzheimer's Dementia Among Individuals With Down Syndrome.

DS-TO-THE-MAX: The Down Syndrome
Towards Optimal Trajectories and Health
Equity using Medicaid Analytic eXtract

Authors: Eric Rubenstein, Salina Tewolde,
Amy Michals, Jennifer Weuve, Juan Fortea,
Matthew Fox, Marcia Pescador Jimenez,
Ashley Scott, Yorghos Tripodis,
Brian Skotko

Easy read was created by Aniqua Mehdi,
Zoe Li-Khan, Dan O'Donnell, and Gus
Edouard

Icons used in this article can be found on thenounproject.com.
Icons and photos without credits are free Adobe Stock photos.

