

A cross-ocean comparison of responses to settlement cues in reef-building corals

Sarah W. Davies¹, Eli Meyer², Sarah M. Guermond² and Mikhail V. Matz¹

¹ Department of Integrative Biology, University of Texas at Austin, Austin, TX, United States

² Department of Integrative Biology, Oregon State University, Corvallis, OR, United States

ABSTRACT

Caribbean coral reefs have deteriorated substantially over the past 30 years, which is broadly attributable to the effects of global climate change. In the same time, Indo-Pacific reefs maintain higher coral cover and typically recover rapidly after disturbances. This difference in reef resilience is largely due to much higher coral recruitment rates in the Pacific. We hypothesized that the lack of Caribbean recruitment might be explained by diminishing quality of settlement cues and/or impaired sensitivity of Caribbean coral larvae to those cues, relative to the Pacific. To evaluate this hypothesis, we assembled a collection of bulk samples of reef encrusting communities, mostly consisting of crustose coralline algae (CCA), from various reefs around the world and tested them as settlement cues for several coral species originating from different ocean provinces. Cue samples were meta-barcoded to evaluate their taxonomic diversity. We observed no systematic differences either in cue potency or in strength of larval responses depending on the ocean province, and no preference of coral larvae towards cues from the same ocean. Instead, we detected significant differences in cue preferences among coral species, even for corals originating from the same reef. We conclude that the region-wide disruption of the settlement process is unlikely to be the major cause of Caribbean reef loss. However, due to their high sensitivity to the effects of climate change, shifts in the composition of CCA-associated communities, combined with pronounced differences in cue preferences among coral species, could substantially influence future coral community structure.

Submitted 30 December 2013

Accepted 15 March 2014

Published 8 April 2014

Corresponding author

Sarah W. Davies,
daviessw@gmail.com

Academic editor

Pei-Yuan Qian

Additional Information and
Declarations can be found on
page 16

DOI 10.7717/peerj.333

© Copyright
2014 Davies et al.

Distributed under
Creative Commons CC-BY 3.0

Subjects Ecology, Marine Biology

Keywords 18S rRNA, Coral recruitment, Crustose coralline algae, Settlement cues, Meta-barcoding, OTU

INTRODUCTION

The majority of reef-building corals are broadcast-spawning species that release gametes annually to produce planktonic larvae that are dispersed by ocean currents (*Baird, Guest & Willis, 2009*). Reef recovery after disturbances, such as catastrophic bleaching events or hurricanes, is critically dependent on the successful recruitment of these planktonic larvae back to reefs (*Buston et al., 2012*). Coral reefs worldwide are declining at accelerating rates, which has been generally attributed to the increase in both global and local anthropogenic

OPEN ACCESS

stressors (*Hoegh-Guldberg et al., 2007*). The specific factors driving this decline, including those affecting coral recruitment, are the subject of active ongoing research.

While coral cover has been declining in Indo-Pacific reefs in recent years (*Bruno & Selig, 2007; Wakeford, Done & Johnson, 2008; De'ath et al., 2012*), their higher biodiversity and range of recruitment and post-recruitment strategies appear to make these reefs more resilient (*Adjeroud et al., 2009; Roff & Mumby, 2012*). Caribbean reefs exhibit lower resilience than Indo-Pacific reefs, which has been attributed to several factors including recruitment failure (*Connell, Hughes & Wallace, 1997; Roff & Mumby, 2012*). Across the Caribbean, recruitment rates of broadcast spawning corals are consistently low (*Hughes & Tanner, 2000; Gardner et al., 2003; Vermeij, 2006; Davies, Matz & Vize, 2013*), even though large reef builders still dominate coral cover on Caribbean reefs (*Kramer, 2003*). Instead, brooding genera such as *Agaricia* and *Porites* are the dominant coral species recruiting on Caribbean reefs (*Bak & Engel, 1979; Green, Edmunds & Carpenter, 2008; Davies, Matz & Vize, 2013*). Spectacular recoveries after disturbances are not uncommon on Pacific reefs (i.e., *Golbuu et al., 2007*), but comparable levels of recovery have not been documented in the Caribbean (but see *Carpenter & Edmunds, 2006; Idjadi et al., 2006*). A comparative study of proximal causes of this difference in coral recruitment among ocean regions could elucidate some of the main drivers of Caribbean recruitment failure.

In principle, low recruitment rates might result from a variety of factors such as reduced coral population sizes, poor spawning synchrony, low fertilization rate, or high mortality (either pre- or post-settlement). Some of these potential explanations are unlikely to apply to the Caribbean-wide recruitment failure. For example, adult population sizes, at least for some Caribbean reefs, are still adequate and spawning remains highly synchronous and prolific (i.e., Flower Garden Banks, *Vize et al., 2005*). High fertilization success is also observed under natural conditions (*Leviton et al., 2004*). While pre- and post-settlement mortality remains among the main potential causes, it is also possible that the effects of climate change in the Caribbean may have disrupted ecological interactions required for the recruitment process itself (*Harrison, 1990*), specifically the interaction between coral larvae and natural settlement cues.

Various factors influence coral settlement (*Maida, Coll & Sammarco, 1994; Mundy & Babcock, 1998; Raimondi & Morse, 2000*), however for many corals the biological properties of the reef surface appear to play a pivotal role in this choice (*Babcock & Mundy, 1996; Heyward & Negri, 1999; Price, 2010; Ritson-Williams et al., 2010*). Crustose coralline algae (CCA; Rhodophyta, Corallinaceae) and associated communities have been shown to be one of the primary inducers of settlement and metamorphosis in coral larvae (*Morse & Morse, 1988; Morse et al., 1996; Heyward & Negri, 1999*). While marine bacteria also influence settlement in coral larvae (*Negri et al., 2001; Tebben et al., 2011; Tran & Hadfield, 2011*), recent work demonstrates that CCA species known to elicit the strongest settlement responses are also the most affected by the changes in ocean chemistry associated with climate change (*Anthony et al., 2008; Doropoulos et al., 2012; Smith et al., 2013*), suggesting that changes in these CCA communities might be responsible for reduced coral recruitment.

Table 1 Settlement cue panel and metabarcoding statistics. CCA cue information including: name of the cue, site the cue was collected at and the oceanographic region the site was located in. Metabarcoding statistics including: number of quality-filtered reads, number of operational taxonomic units (OTUs), number of reads uniquely mapping to OTUs and the mapping efficiency of the reads.

Cue	Site	Region	# of quality-filtered reads	# of OTUs	# of reads uniquely mapping to OTUs	Mapping efficiency
A1	Orpheus Island (GBR)	Pacific	2760	6	2714	0.983
A2	Orpheus Island (GBR)	Pacific	4906	10	3566	0.727
B	Bonaire	Caribbean	1447	8	1222	0.844
FF	Florida Keys	Caribbean	2762	10	2411	0.873
FGB	Flower Garden Banks	Caribbean	2492	9	2341	0.939
G	Guam	Pacific	4495	11	2963	0.659
P	Pohnpei	Pacific	NA	NA	NA	NA

We hypothesized that the correspondence between coral larval preferences and availability/quality of settlement cues (CCA associated communities) on Caribbean reefs may have broken down, resulting in reduced coral recruitment. This mismatch may take two forms: (1) appropriate settlement cues may be present, but larvae have lost the ability to respond to them, or (2) larval responses remain intact, but effective settlement cues are absent. To evaluate these possibilities, we performed reciprocal preference trials for three species of broadcast spawning Caribbean corals (*Montastraea franksi*, *Diploria strigosa* and *Stephanocoenia intersepta*) and four Indo-Pacific corals (*Acropora millepora*, *Acropora tenuis*, *Favia lizardensis* and *Ctenactis echinata*). Larval response of each species was tested against a collection of seven samples of CCA-associated communities from various locations in the Caribbean ($n = 3$) and the Indo-Pacific ($n = 4$). Since we were not interested in characterizing larval responses to particular CCA species but rather wanted to generally evaluate cue presence-absence in the environment, we collected whole encrusting communities from reef top or rubble to better approximate what coral larvae might encounter in nature rather than picking specific CCA species. To evaluate the diversity of the cues tested, their taxonomic composition was characterized *post hoc* by metabarcoding based on the eukaryotic ribosomal 18S rRNA gene.

MATERIALS AND METHODS

Settlement cue collections

Collections of CCA associated communities (which we will refer to as “cue * s” from now on) from a number of locations in the Caribbean and Pacific was assembled (Table 1). Caribbean locations included the Florida Keys (FF), the Flower Garden Banks (FGB) and Bonaire (B). Pacific locations included Orpheus Island (Great Barrier Reef, Australia: A1, A2), Pohnpei (P) and Guam (G). Samples were stored in seawater at 80 °C.

Caribbean spawn I

On the evening of August 31, 2010 (eight days after the full moon), during the annual coral spawning event at the Flower Garden Banks National Marine Sanctuary (FGBNMS),

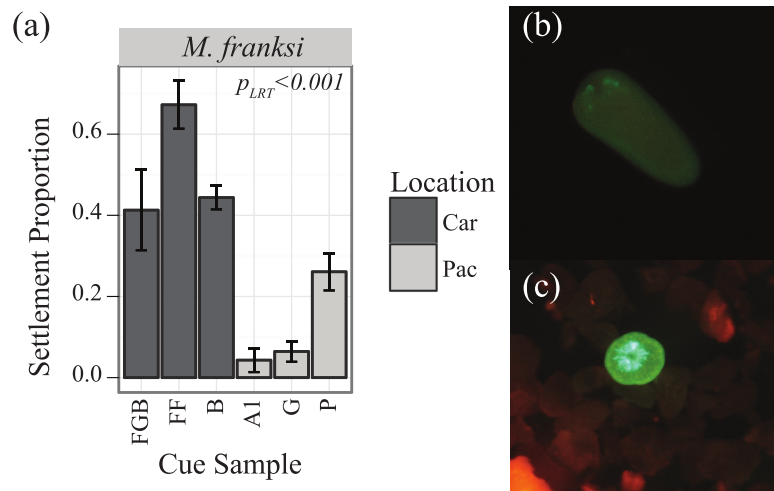


Figure 1 Settlement responses of *M. franksi* from the Flower Garden Banks in 2010. Settlement responses of *M. franksi* from the Flower Garden Banks in 2010 (mean \pm SE). (A) Proportion of coral settlement. Darker bars correspond to Caribbean cues, lighter bars to Pacific cues. (B) Fluorescent photograph of *M. franksi* larvae before settlement. (C) Fluorescent photograph of *M. franksi* recruit post-settlement.

gamete bundles were collected with mesh nets directly from three distinct *Montastraea* (*Orbicella*) *franksi* colonies. Bundles were brought to the surface, cross-fertilized for one hour and then excess sperm was removed by rinsing through 150 μ m nylon mesh. Larvae were reared in 1 μ m filtered seawater (FSW) in three replicate plastic culture vessels at 5 larvae per ml. Larvae were transferred to the laboratory at the University of Texas at Austin on September 1, 2010. Samples were collected under the FGBNMS permit # FGBNMS-2009-005-A2.

Preliminary competency experiments assayed with several CCA samples determined that *M. franksi* larvae did not reach competence until 14 days post-fertilization, therefore CCA preference trials were started at this age. To quantify the responsiveness of settlement-competent larvae to six different cue samples (Table 1), twenty larvae per well were transferred into 10 ml of FSW in 6-well plates. Cue samples were finely ground with a mortar and pestle shortly before the settlement trials and a single drop of the resulting uniform slurry was added to each well ($n = 4$ well replicates per cue, randomly assigning cues to wells). Four FSW control treatments were also included. The proportion of metamorphosed larvae (visual presence of septa) was quantified after 48 h using a fluorescent stereomicroscope MZ-FL-III (Leica, Bannockburn, IL, USA) equipped with F/R double-bandpass filter (Chroma no. 51004v2) (Figs. 1B and 1C).

Pacific spawn I

In November 2010, at Orpheus Island Research Station, Great Barrier Reef, Australia, the same type of experiments as described in the previous section were conducted with the same panel of cues (plus an additional Australian cue, A2). Four species of broadcast

spawning corals were tested: *Acropora millepora*, *A. tenuis*, *Favia lizardensis*, and *Ctenactis echinata*. Adult corals were collected and maintained in raceways until spawning at which point they were isolated in 20-gallon plastic bins. Following spawning, gametes were collected from several colonies and cross-fertilized as described above. Initial trials to test for larval competency were conducted and final data were collected on 5d-old larvae, although *C. echinata* were never observed to settle over a period of several weeks, even in response to GLWamide (data not shown). Settlement assays were conducted as in the 2010 Caribbean Spawn I described above, the only differences being inclusion of A2 cue and increase of per-cue replication level to $n = 6$ (Table 1). Samples for Australian fieldwork were collected under Great Barrier Reef Marine Park Authority permit number G10/33943.1.

Caribbean spawn II

On the evening of August 18, 2011 (eight days after the full moon), gamete bundles from multiple colonies of three broadcast-spawning Caribbean coral species were collected from FGBNMS (*Diploria strigosa*, *Montastraea franksi* & *Stephanocoenia intersepta*). Gametes were cross-fertilized and maintained in similar conditions as in 2010 and transferred to the laboratory at the University of Texas at Austin on August 21, 2011. Samples were collected under permit FGBNMS-2009-005-A3. Settlement assays were conducted on all species across all cues in the panel including A2 ($n = 6$ per cue). *D. strigosa* trials were conducted on four day old larvae after initial testing for competence and *M. franksi* trials were completed at 21 days old after competence was determined. *S. intersepta* were never observed to settle over a period of two months.

Metabarcoding of cue communities

In order to determine the taxonomic composition of each cue sample, we used deep amplicon sequencing. DNA was isolated from ground-up cue samples as described in [Davies et al. \(2013\)](#). The conserved 5' portion of the eukaryotic small-subunit ribosomal RNA gene (18S SSU) was amplified via PCR using the *SP-F-30* forward primer (5' TCTCAAAGACTAAGCCATGC 3') and the reverse primer *SP-R-540* (5' TTACAGAGCTGGAATTACCG 3') ([Vidal, Meneses & Smith, 2002](#)). Each 30 μ l polymerase chain reaction (PCR) mixture contained 10 ng of DNA template, 0.1 μ M forward primer, 0.1 μ M reverse primer, 0.2 mM dNTP, 3 μ l 10X ExTaq buffer, 0.025 U ExTaq Polymerase (Takara Biotechnology) and 0.0125 U Pfu Polymerase (Agilent Technologies), and was amplified using a DNA Engine Tetrad2 Thermal Cycler (Bio-Rad, Hercules, CA, USA) with a cycling profile of 94 °C 5 min—(94 °C 40 s—55 °C 2 min—72 °C 60 s) \times N—72 °C 10 min, with $N = 17$ –24 depending on the sample. Amplicons (~550 bp bands) were successfully obtained from 6 out of 7 samples (Pohnpei sample failed to amplify despite increased cycle numbers and repeated attempts). Amplicons were cleaned using PCR clean-up kit (Fermentas), 10 ng of the cleaned product was used as template in a second PCR to incorporate 454-Titanium primers and unique barcodes. Each PCR contained 0.1 μ M of the universal *Btm-SPR-F* forward primer (5' CCTATCCCCTGTGTGCCTTGCCAGTCTCAGTCTCAAAGACTAAGCCATGC 3',

underlined stretch matches *SP-F-30* primer) and 0.1 μ M of unique reverse primer containing a 4-bp barcode (5' CCATCTCATCCCTGCGTGTCTCC-GACTCAGTACTTTACAGAGCTGGAATTACCG 3', underlined stretch matches *SP-R-540* primer, bold indicates 4 bp barcode). The cycling profile was 95 °C 5 min—(95 °C 30 s—55 °C 30 s—72 °C 60 s) \times 4—72 °C 5 min. Amplicons were gel-purified and pyrosequenced using 454-FLX (Roche) with Titanium chemistry at the Genome Sequencing and Analysis Facility (GSAF) at the University of Texas at Austin. All cue samples were sequenced with the exception of Pohnpei, which we were unable to amplify, even with additional efforts involving modifying DNA template concentration and PCR cycle numbers.

Resulting reads were split by barcode and trimmed using a custom Perl script that removes adaptors, barcodes and low quality read ends. Reads that became shorter than 250 bp after this trimming step were discarded. Reads were then clustered at 97% identity using the program *cd-hit-454* (Huang et al., 2010). The longest sequences from clusters containing > 1% of the filtered reads were selected as representatives of distinct operational taxonomic units (OTUs) and used as reference sequences for mapping the filtered reads using the *runMapping* module of Newbler v. 2.6 (Roche) with repeat score threshold (parameter *-rst*) of 3 (i.e., a read was considered uniquely mapped if its best hit among OTU sequences was different from the next-best hit by 3 or more additionally aligned bases). The proportion of reads uniquely mapping to a particular OTU was taken as a measure of the relative abundance of this OTU in the sample. All OTUs accounting for $\geq 1\%$ mapped reads were assigned to their most likely taxonomic order based on BLAST matches (Altschul et al., 1997) against nonredundant (nr) NCBI database. The non-metric multidimensional scaling (NMDS) analysis based on Bray-Curtis similarities of relative proportions of observed orders was performed using the *vegan* package in R (Jari Oksanen et al., 2013).

To evaluate the degree to which our sequencing coverage captured sequence diversity in each sample, we conducted rarefaction analysis. The reads mapping to major OTUs (OTUs comprising $\geq 1\%$ of each sample) were randomly resampled at various depths to simulate the effects of lower sequencing coverage. For each simulated sequencing depth, we randomly sampled with replacement and counted the number of OTUs identified in the sampled subset. Sampling was performed 1000 times for each simulated sequencing depth to calculate the average number of OTUs detected at each depth (Fig. S1). Perl script for rarefaction analysis (*cca_rarefaction.pl*) and R script for plotting rarefaction curves (*rarefaction_figs.R*) are available in Supplemental Information 1.

To further characterize the taxonomic diversity of cue samples, two OTUs accounting for the highest proportion of reads within each sample (together representing 39.4–68.3% of the total mapped reads in a cue sample) (Table 2) were aligned using MAFFT version 7 (Katoh & Standley, 2013). This alignment was then used to construct a neighbor-joining tree in BIONJ (Gascuel, 1997) with 1000 bootstrap replicates. This tree was downloaded in Newick format and modified for visualization using FigTree V1.4.0 (<http://tree.bio.ed.ac.uk/software/figtree/>).

Table 2 Characteristics of the two most abundant operational taxonomic units (OTUs) in each cue sample including: the OTU name, length of the consensus sequence, percent of the mapped reads that mapped to that OTU, the best NCBI Blast hit for that OTU, if that blast hit was a CCA species, if that blast hit was in the phylum Rhodophyta, and the Genbank Accession Number for that reference OTU.

OTU	Genbank accession number	Length (bp)	% mapped reads	NCBI blast hit	CCA	Rhodophyta
Aus1_1	KJ609529	498	54.2	Uncultured fungus	N	N
Aus1_2	KJ609530	482	14.1	Uncultured fungus	N	N
Aus2_1	KJ609525	514	36.9	Mastophoroideae	Y	Y
Aus2_2	KJ609526	513	6.6	Mastophoroideae	Y	Y
Bonaire_1	KJ609527	528	27.8	Order Gigartinales	N	Y
Bonaire_2	KJ609528	516	15.4	Hydrolithion spp	Y	Y
Florida_1	KJ609523	519	52.0	Subfamily Melobesioideae	Y	Y
Florida_2	KJ609524	519	12.7	Subfamily Melobesioideae	Y	Y
FGB_1	KJ609531	531	27.4	Order Corallinales	Y	Y
FGB_2	KJ609532	520	21.6	Subfamily Melobesioideae	Y	Y
Guam_1	KJ609521	520	26.3	Hydrolithon onkodes	Y	Y
Guam_2	KJ609522	520	13.1	Hydrolithon onkodes	Y	Y

Statistical analysis

All statistical analyses were implemented in R (*R Development Core Team, 2013*) using the ANOVA function based on arcsine square root transformed proportions of settled larvae. For all models, two factors were included: cue sample nested within cue origin (Pacific/Caribbean) and coral species. Significance of factors was evaluated using likelihood ratio tests (LRT). If a factor was found to be significant, a post-hoc Tukey's HSD test was used to evaluate the significance of each pair-wise comparison. All assumptions of parametric testing were validated using diagnostic plots in R.

To visualize coral species-specific cue preferences, both principal components analysis (PCA) and non-metric multidimensional scaling (NMDS) ordination were used. PCA was computed using the cmdscale (*R Development Core Team, 2013*) and vegan (*Jari Oksanen et al., 2013*) packages. Bray-Curtis similarity coefficients were used for NMDS analysis using vegan package (*Jari Oksanen et al., 2013*). The resulting PCA and NMDS scores were visualized in two-dimensional ordination space.

RESULTS

Caribbean spawn I

Larvae of the only coral species that was obtained, *Montastraea franksi*, exhibited distinct preferences for specific cues in the panel tested (Table 3, $P_{LRT} < 0.001$). Settlement was significantly higher in response to Caribbean cues, although the cue from Pohnpei was only significantly surpassed by the most preferred Caribbean cue (Florida, FF) (Fig. 1A; Tukey's HSD, $p = 0.006$). No recruits were observed in the control wells.

Table 3 Summary statistics for settlement responsiveness for all Caribbean and Indo-Pacific species. Likelihood ratio test (LRT) and Tukey's HSD statistics for significant model terms testing the proportion of settlement in response to different CCA cues.

Experiment	Test	Factor	df	SS	F	p	
Caribbean Spawn I							
<i>M. franksi</i>	LRT	Cue	5	1.99	18.34	<0.001	
		Residuals	18	0.40	0.02		
	Tukey HSD	B-A1					<0.001
		FF-A1					<0.001
		FGB-A1					<0.001
		P-A1					0.02
		G-B					0.002
		G-FF					<0.001
		P-FF					0.007
		G-FGB					0.003
Pacific Spawn I							
LRT	Cue	6	7.89	1.31	<0.001		
	Species	2	3.28	1.64	0.012		
	Cue * Species	12	2.24	0.19	0.005		
	Residuals	104	7.52	0.07			
Tukey HSD	Species						
	Mil-Liz					<0.001	
	Ten-Liz					<0.001	
	Cue						
	A2-A1					<0.001	
	B-A2					<0.001	
	FF-A2					<0.001	
	FGB-A2					<0.001	
	G-A2					<0.001	
	P-A2					<0.001	
	FF-B					0.015	
	P-B					0.027	
	G-FF					0.002	
	P-G					0.003	
	Cue * Species						
	<i>Favia Lizardensis</i>						
	None						
	<i>Acropora millepora</i>						
	A2-A1						<0.001
	A2-B						<0.001
	A2-FF						0.011
	A2-FGB						<0.001
	A2-G						<0.001
A2-P						<0.001	
<i>Acropora tenuis</i>							
A2-A1						0.006	

(continued on next page)

Table 3 (continued)

Experiment	Test	Factor	df	SS	F	p
		A2-B				0.004
		A2-FGB				<0.001
		A2-G				<0.001
		FF-FGB				0.05
		FF-G				0.03
Caribbean Spawn II	LRT	Cue	6	2.17	0.36	<0.001
		Species	1	2.44	2.44	<0.001
		Cue * Species	6	0.55	0.09	0.004
		Residuals	70	2445.07		
	Tukey HSD	<u>Species</u>				
		Fra-Sti				<0.001
		<u>Cue</u>				
		A2-A1				<0.001
		B-A1				0.045
		FF-A1				<0.001
		FGB-A1				<0.001
		A2-B				0.001
		A2-G				<0.001
		A2-P				<0.001
		FF-G				<0.001
		FGB-G				0.003
		<u>Cue * Species</u>				
		<i>Diploria strigosa</i>				
		A2-A1				0.002
		A2-G				0.017
		A2-P				0.018
		B-A1				0.010
		<i>Montastraea franksi</i>				
		A2-A1				<0.001
		A2-B				<0.001
	A2-G				<0.001	
	A2-P				0.05	
	FF-A1				0.004	
	FF-B				0.014	
	FF-G				0.004	

Notes.

Cues: A1, Australia 1; A2, Australia 2; B, Bonaire; G, Guam; FF, Florida; FGB, Flower Garden Banks; P, Pohnpei.

Species: Fra, *Montastraea franksi*; Liz, *Favia lizardensis*; Mil, *Acropora millepora*; Str, *Diploria strigosa*; Ten, *Acropora tenuis*.

Pacific spawn I

Both main effects of cue ($P_{LRT} < 0.001$) and coral species ($P_{LRT} < 0.001$) were significant, as well as their interaction ($P_{LRT} = 0.005$), the latter indicating that the coral species differed significantly in their cue preferences (Fig. 2). There were no observable tendencies of Indo-Pacific larvae to prefer cues from either Indo-Pacific or Caribbean. Pairwise comparisons between species in their responses to settlement cues determined that

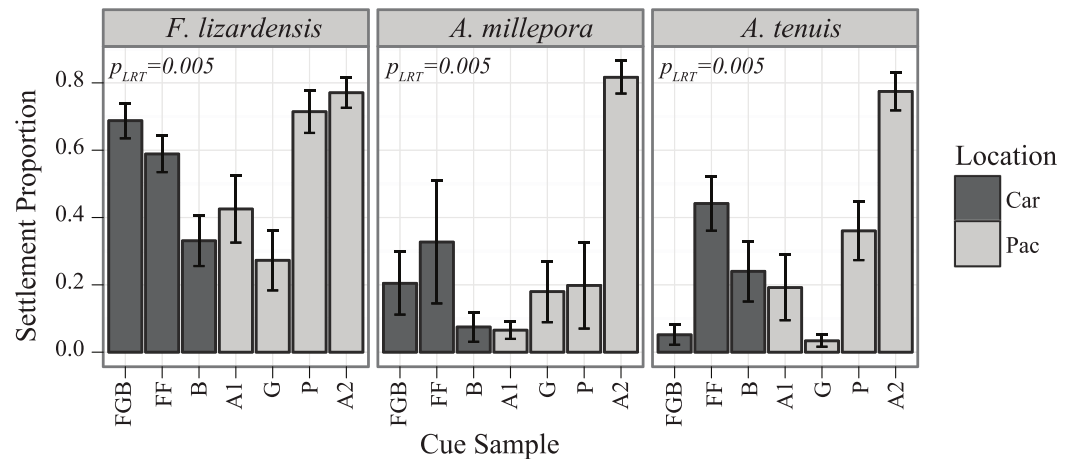


Figure 2 Settlement responses of Pacific corals from Orpheus Island, GBR in 2010 (mean ± SE). Darker bars correspond to Caribbean cues, lighter bars to Pacific cues.

both *A. millepora* and *A. tenuis* were different from *F. lizzardensis*, but no significant difference was observed between these two acroporids (Tukey's HSD, $p = 0.483$) (Table 3). With the exception of *Ctenactis echinata* that failed to respond to any cue, all species exhibited high response to the Australia 2 (A2) cue and also responded to Florida (FF) and Pohnpei (P) cues greater than those cues from Bonaire (B) and Guam (G) (Table 3). *F. lizzardensis* responded to all cues; the only suggestion of specificity was a marginal, but insignificant, difference (Tukey's HSD, $p = 0.063$) between A2 (70% settlement) and G (30% settlement). The acroporids were similar in their cue preferences, although *A. tenuis* settled in greater than *A. millepora* and demonstrated no selectivity between Australia 2 (A2) and Florida (FF) or Pohnpei (P). *A. tenuis* also preferred Florida (FF) cue over the Flower Garden Banks (FGB) (Tukey's HSD, $p = 0.05$) and Bonaire (B) (Tukey's HSD, $p = 0.03$) cues. No larvae of any species tested were observed to settle in control conditions.

Caribbean spawn II

Similarly to the results of the Pacific spawn, there were significant main effects of cue ($P_{LRT} < 0.001$) and species ($P_{LRT} < 0.001$) and a significant interaction term ($P_{LRT} = 0.004$) (Fig. 3, Table 3). The most preferred cue of *D. strigosa* was Australia 2 (A2), followed by all Caribbean cues. The tendency of *M. franksi* larvae to prefer Caribbean cues observed in 2010 was not detected in 2011, as *M. franksi* preferred A2 (which was not included in the 2010 panel) to any other cue in the panel. Compared to *M. franksi*, *D. strigosa* settled at a higher rate, regardless of cue (Tukey's HSD, $p < 0.001$). No settlement was observed for the gonochoristic broadcaster *Stephanocoenia intersepta* regardless of the cue offered. No *M. franksi* larvae were observed to settle in the control conditions, however; for *D. strigosa*, an average of 3% of larvae spontaneously settled in control conditions (data not shown).

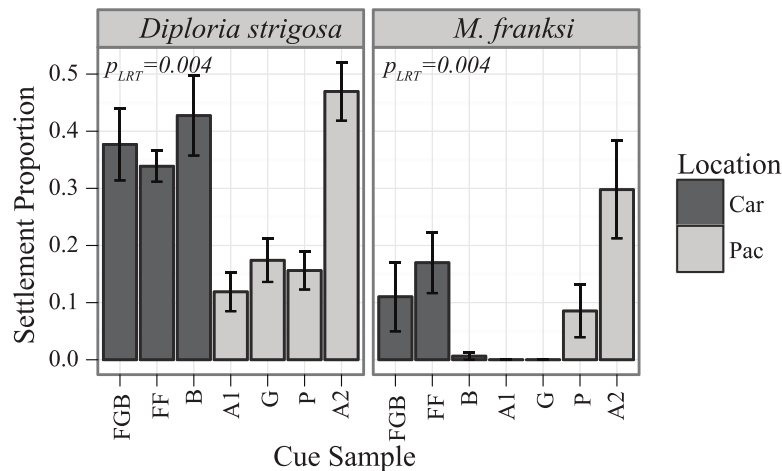


Figure 3 Settlement responses of Caribbean corals from the Flower Garden Banks in 2011 (mean \pm SE). Darker bars correspond to Caribbean cues, lighter bars to Pacific cues.

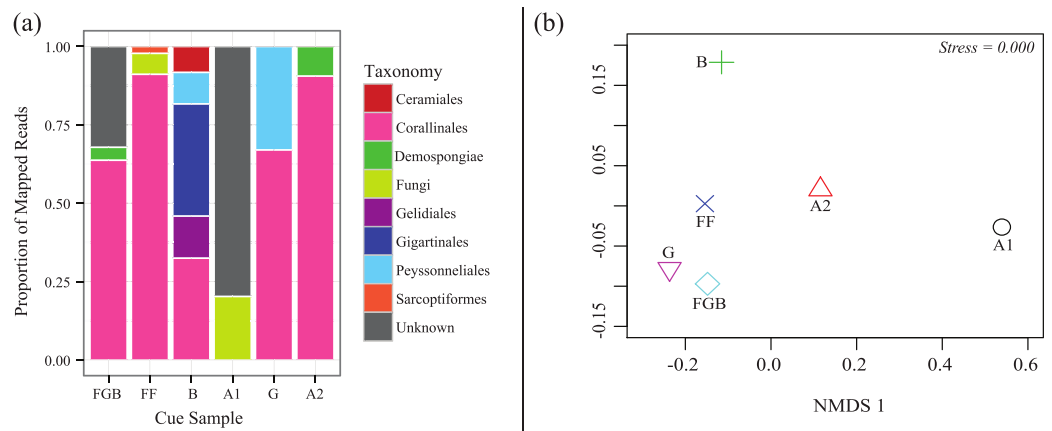


Figure 4 CCA cue community compositions. (A) Relative proportions of mapped reads belonging to various taxonomic groups. (B) Non-metric multidimensional scaling (Bray-Curtis nMDS—2 dimensional) based on proportions of taxa in the cue communities.

Metabarcoding of cue samples

From the total 20,872 reads, 18,862 were left after quality filtering ($\sim 90\%$). 15,217 reads mapped to the OTUs derived from 97% similarity clusters containing $>1\%$ of the total reads. Mapping efficiencies for each cue sample back to its OTUs was 66–98% with a mean of 81%. Rarefaction analysis indicated that our sequencing coverage efficiently captured sequence diversity in each sequenced sample (Fig. S1). The relative proportions of each taxonomic order differed between cue samples (Fig. 4). Australia 2 (A2), Florida (FF), Guam (G) and Flower Garden Banks (FGB) all contained $>50\%$ of the order Corallinales, to which crustose coralline algae (CCA) belong. Both Bonaire (B) and Guam (G) also contained high proportions ($>25\%$) of filamentous red algal orders within the Phylum Rhodophyta (Gelidiales, Gigartinales and Peyssonneliales) (Fig. 4A)

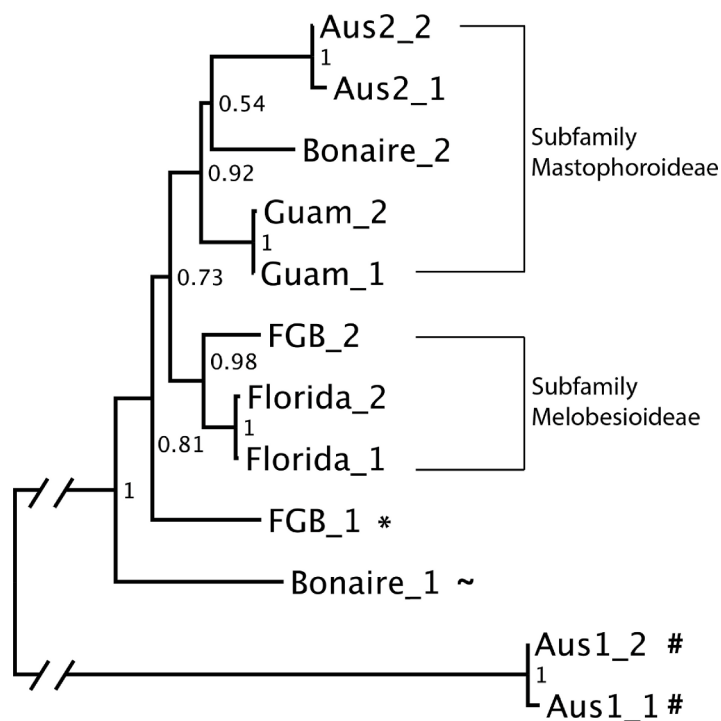


Figure 5 Neighbor-joining (NJ) tree of the two most abundant OTUs in each cue sample. Bootstrap support is shown at each node. Symbol (*) indicates that the reference sequence belongs to order Corallinales, (~) belongs to the Phylum Rhodophyta and (#) indicates that the taxonomic affiliation of the OTU could not be resolved.

Interestingly Australia 1 (A1) contained no Corallinales reads and the majority of its OTUs remained taxonomically unplaced. NMDS also demonstrated the differences between cue communities showing cues with similar proportions of order Corallinales clustering more closely (Fig. 4B).

The neighbor-joining tree constructed using the two most highly represented OTUs from each cue sample was well resolved, with bootstrap scores ranging from 0.54 to 1 (Fig. 5). Analysis of sequence similarity using BLAST confirmed that all but one (A1) of the successfully sequenced cues predominantly contained Rhodophyta (red algae) sequences. Of these, all but one OTU from Bonaire were from order Corallinales (CCAs). The two main clades in the neighbor-joining tree corresponded to the subfamilies Mastophoroideae and Melobesioideae. One of the references from FGB was identified to the order Corallinales, but its family remained unresolved.

Coral species-specific preferences

Both PCA and NMDS analyses demonstrated that corals exhibit species-specific cue preferences, with the exception of the two *Acropora* species that were similar to each other (Fig. 6). NMDS was superior to PCA at resolving these differences with a low stress value (0.0692) (Fig. 6B). For the PCA (Fig. 6A), component 1 (PCA1) explained 45% of the variation and component 2 (PCA2) explained 15%.

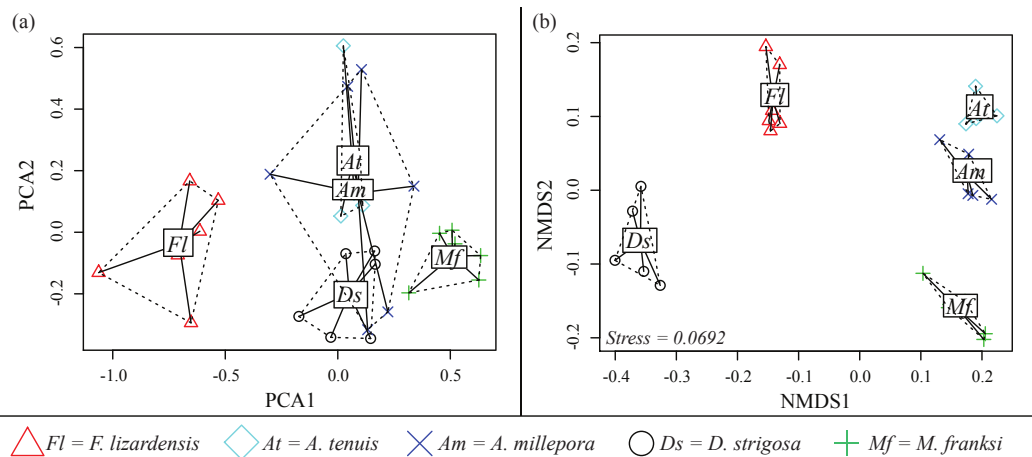


Figure 6 CCA cue preference differences. Cue preferences differ between coral species from the Caribbean and Pacific (see legend), based on proportion of larvae that settled in response to the cue. (A) Principle component analysis (PCA) (B) Non-metric multidimensional scaling (Bray-Curtis nMDS, 2-dimensional).

DISCUSSION

Caribbean larvae, with the exception of the gonochoric broadcaster *S. intersepta* that failed to respond to any cue, responded to the settlement cues tested in a similar manner to Pacific larvae, suggesting that the lack of recruitment observed in the Caribbean is not due to poor ability of larvae to perceive settlement cue. Furthermore, the panel of Caribbean cues tested here were very successful in inducing settlement of both Caribbean and Indo-Pacific corals tested (Figs. 1–3), demonstrating that effective cues are present on Caribbean reefs and were represented within our collection of cue samples. Previous studies of coral settlement, from both the Caribbean and Indo-Pacific, have demonstrated that coral larvae settle higher in response to certain species of CCAs over others (Harrington et al., 2004; Arnold, Steneck & Mumby, 2010; Price, 2010; Ritson-Williams et al., 2010). Our data confirm these results and further demonstrate that these preferences can vary substantially among broadcast-spawning coral species, even if these corals are from the same reef environment at the same location. In addition, some species, such as *F. lizardensis*, appear to be less specific overall and settle in high proportions regardless of cue type (at least for the cue panel tested here), while others did not respond to any cues tested (*C. echinata*, *S. intersepta*).

Preferences of Caribbean corals

Data from the pilot study in the Caribbean (2010) suggested the potential for co-adaptation between larval cue receptors and Caribbean cues, as the larvae of *M. franksi* settled in higher proportions in response to Caribbean cues rather than Pacific cues (Fig. 1). However, results of the second Caribbean spawning season (2011) did not support this hypothesis since both *M. franksi* and *D. strigosa* responded best to the newly introduced Pacific cue (A2). Beyond A2, Caribbean larvae settled well in response

to Caribbean cues and even (in case of *D. strigosa*) tended to prefer them (Fig. 3), indicating that the Caribbean corals tested were fully capable of settlement in response to local Caribbean cues. *M. franksi* and *D. strigosa* also demonstrated species-specific cue preferences (Fig. 6). Year-to-year variation in settlement success for *M. franksi* was observed, with settlement in 2011 being less successful than 2010 (Figs. 1 and 3). Although great care was taken to culture larvae in identical conditions, unknown year-to-year variations in culture conditions may have influenced larval settlement. All cues were kept frozen, however each cue was collected at different times so settlement cue age may have altered their effectiveness through time by modifying cue stability. Therefore, the coral responses to the cues were only compared among coral species within the same field season. It is also possible that the year-to-year variation observed in this study reflects the natural stochasticity of the recruitment process or genetic difference between larval cohorts (Meyer et al., 2009).

Preferences of Pacific corals

No Indo-Pacific-wide trends were ever observed for the corals and cues tested here, but clear differences in cue preferences between coral species were apparent, with the two *Acropora* species exhibiting more specific settlement behavior (Figs. 2 and 6). The strict preferences of *A. millepora* and *A. tenuis* larvae have been reported previously (Harrington et al., 2004), and the similarity of their cue preferences observed in our experiments (Fig. 6) might be attributable to their phylogenetic proximity. *Favia lizardensis* was much less selective and high settlement rates were observed in response to most cues (Fig. 2). This result is similar to observations from its Caribbean congener, *Favia fragum*, which had previously been shown to be relatively indiscriminate in its settlement behavior (Nugues & Szmant, 2006), although it must be noted that *F. fragum* is a brooding rather than broadcast-spawning species. While our data do not formally allow drawing taxonomy-related conclusions, the similarity of cue preferences in congeneric coral species across our cue panel is notable and might reflect the general pattern of cue preference evolution.

Corals that would not settle: *Ctenactis echinata* and *Stephanocoenia intersepta*

Both species demonstrated complete lack of settlement response to the same cue panel that successfully induced metamorphosis in other corals, and therefore these species represent the most extreme demonstration of divergent cue preferences among the corals tested. While *C. echinata* was only tested at five days post fertilization, leaving open a possibility that the culture had not yet reached competency, *S. intersepta* was assayed for settlement for approximately two months and was still never observed to settle for any cue. Interestingly, these species are from different oceans but share one key life history trait: they are both gonochoric (i.e., have separate sexes) whereas all other coral species tested were hermaphroditic. It is tempting to speculate that this shared life history trait underlies their lack of response in our settlement trials. Previous work on a gonochoric, broadcast-spawning gorgonian coral demonstrated that adult proximity to conspecifics

had a large effect on reproductive success (Coffroth & Lasker, 1998), one of the possibilities being that gonochoric corals might need additional cues from conspecifics to ensure close proximity and efficient fertilization during spawning (Tamburri, Zimmer & Zimmer, 2007). While we cannot discount that these corals were unresponsive because they had not reached competence or they were not offered appropriate cues, we believe that this hypothesis merits detailed investigation in the future.

Composition of the cue communities

Each cue community differed in its relative proportions of taxa; however, most cues that were effective at inducing settlement in the corals tested here contained >50% order Corallinales, the order which contains CCAs (Fig. 4). Notably, one cue (A1) yielded no Corallinales reads yet still induced settlement, although it was among the least effective. Two major CCA sub-families were represented in the cue communities: Mastophoridae and Melobesioideae (Fig. 5). These taxonomic groups have previously been shown to be strong larval settlement inducers (Heyward & Negri, 1999; Harrington et al., 2004; Ritson-Williams et al., 2010), indicating that our cue collections efforts were, in fact, at least taxonomically-related to previously established settlement cues for corals. While we could only discriminate taxa to the order or family level, this is the first study to create a sequence database of natural coral settlement cues.

Possible consequences of coral species-specific cue preferences

Settlement choice has been shown to strongly influence post-settlement survival, illustrating the consequences of larval selectivity (Babcock & Mundy, 1996; Harrington et al., 2004). Divergent larval settlement preferences correlating with cue availability in the adults' natural habitat have been previously demonstrated for two coral species from Guam, *Stylaraea punctata* and *Goniastrea retiformis* (Golbuu & Richmond, 2007). However, divergent preferences between these species were expected since they do not co-occur in the same reef environment; moreover, *S. punctata* is a brooder while *G. retiformis* is a broadcast spawner. Our study is the first to document species-specific preferences in a panel of settlement cues among broadcast-spawning corals from the same reef community for both the Indo-Pacific and the Caribbean (Fig. 6), and it is tempting to speculate that these preferences might play a role in coral community assembly. While our study did not, by any means, exhaust all potential cues available for corals arriving to reefs, it did demonstrate that some coral species are considerably more "choosy". This finding is especially concerning given ongoing climate change, since CCA are among the most sensitive reef organisms to both warming and acidification (Webster et al., 2011; Ragazzola et al., 2012; Doropoulos & Diaz-Pulido, 2013; Webster et al., 2013). Diminishing CCA abundances and effectiveness as settlement inducers might be accompanied by a reduction in CCA diversity, which in turn could lead to coral community shifts in favor of less selective coral species that do not require particular settlement cues.

Our research demonstrates that Caribbean coral larvae can respond to the local settlement cues on par with Indo-Pacific larvae, suggesting that, at least in the lab, interactions between corals and cues on Caribbean reefs have not been compromised

relative to the Indo-Pacific. However, it is clear that other processes are causing region-wide Caribbean recruitment failure, and identifying these processes should remain a research priority.

ACKNOWLEDGEMENTS

We acknowledge personnel at the FGBNMS (E Hickerson & GP Schmahl) and Orpheus Island Research Station for permits (FGB: FGBNMS-2009-005-A2, A3 and GBR: G10/33943.1) and the FGBNMS for boat time. We would also like to thank the reviewers and the editor for very detailed and useful revisions on the manuscript.

ADDITIONAL INFORMATION AND DECLARATIONS

Funding

Research was funded by the National Science Foundation grant DEB-1054766 to MVM, a departmental start-up grant from the Section of Integrative Biology at the University of Texas at Austin to SWD and the PADI Foundation Award to SWD. The funders had no role in study design, data collection and analysis, decision to publish, or preparation of the manuscript.

Grant Disclosures

The following grant information was disclosed by the authors:
National Science Foundation: DEB-1054766.

Competing Interests

The authors declare there are no competing interests.

Author Contributions

- Sarah W. Davies conceived and designed the experiments, performed the experiments, analyzed the data, contributed reagents/materials/analysis tools, wrote the paper, prepared figures and/or tables, reviewed drafts of the paper.
- Eli Meyer conceived and designed the experiments, performed the experiments, reviewed drafts of the paper.
- Sarah M. Guermond performed the experiments, reviewed drafts of the paper.
- Mikhail V. Matz conceived and designed the experiments, performed the experiments, contributed reagents/materials/analysis tools, reviewed drafts of the paper.

Field Study Permissions

The following information was supplied relating to ethical approvals (i.e., approving body and any reference numbers):

Flower Garden Banks National Marine Sanctuary: FGBNMS-2009-005-A2, A3
Orpheus Island Research Station: G10/33943.1

DNA Deposition

The following information was supplied regarding the deposition of DNA sequences:

Top OTU references have been deposited on Genbank: Accession numbers [KJ609521–KJ609532](#).

In addition, raw sff can be found on the Sequence Read Archive (SRA) Accession Number: [SRP040596](#).

Supplemental Information

Supplemental information for this article can be found online at <http://dx.doi.org/10.7717/peerj.333>.

REFERENCES

- Adjeroud M, Michonneau F, Edmunds PJ, Chancerelle Y, de Loma TL, Penin L, Thibaut L, Vidal-Dupiol J, Salvat B, Galzin R. 2009.** Recurrent disturbances, recovery trajectories, and resilience of coral assemblages on a South Central Pacific reef. *Coral Reefs* **28**:775–780 DOI [10.1007/s00338-009-0515-7](#).
- Altschul SF, Madden TL, Schaffer AA, Zhang JH, Zhang Z, Miller W, Lipman DJ. 1997.** Gapped BLAST and PSI-BLAST: a new generation of protein database search programs. *Nucleic Acids Research* **25**:3389–3402 DOI [10.1093/nar/25.17.3389](#).
- Anthony KRN, Kline DI, Diaz-Pulido G, Dove S, Hoegh-Guldberg O. 2008.** Ocean acidification causes bleaching and productivity loss in coral reef builders. *Proceedings of the National Academy of Sciences of the United States of America* **105**:17442–17446 DOI [10.1073/pnas.0804478105](#).
- Arnold SN, Steneck RS, Mumby PJ. 2010.** Running the gauntlet: inhibitory effects of algal turfs on the processes of coral recruitment. *Marine Ecology Progress Series* **414**:91–105 DOI [10.3354/meps08724](#).
- Babcock R, Mundy C. 1996.** Coral recruitment: consequences of settlement choice for early growth and survivorship in two scleractinians. *Journal of Experimental Marine Biology and Ecology* **206**:179–201 DOI [10.1016/S0022-0981\(96\)02622-6](#).
- Baird AH, Guest JR, Willis BL. 2009.** Systematic and biogeographical patterns in the reproductive biology of scleractinian corals. *Annual Review of Ecology, Evolution, and Systematics* **40**:551–571 DOI [10.1146/annurev.ecolsys.110308.120220](#).
- Bak RPM, Engel MS. 1979.** Distribution, abundance and survival of juvenile hermatypic corals (Scleractinia) and the importance of life history strategies in the parent coral community. *Marine Biology* **54**:341–352 DOI [10.1007/BF00395440](#).
- Bruno JF, Selig ER. 2007.** Regional decline of coral cover in the indo-pacific: timing, extent, and subregional comparisons. *PLoS ONE* **2**:e711 DOI [10.1371/journal.pone.0000711](#).
- Buston PM, Jones GP, Planes S, Thorrold SR. 2012.** Probability of successful larval dispersal declines fivefold over 1 km in a coral reef fish. *Proceedings of the Royal Society B: Biological Sciences* **279**:1883–1888 DOI [10.1098/rspb.2011.2041](#).
- Carpenter RC, Edmunds PJ. 2006.** Local and regional scale recovery of *Diadema* promotes recruitment of scleractinian corals. *Ecology Letters* **9**:268–277.
- Coffroth MA, Lasker HR. 1998.** Population structure of a clonal gorgonian coral: the interplay between clonal reproduction and disturbance. *Evolution* **52**:379–393 DOI [10.2307/2411075](#).

- Connell JH, Hughes TP, Wallace CC. 1997. A 30-year study of coral abundance, recruitment, and disturbance at several scales in space and time. *Ecological Monographs* 67:461–488 DOI 10.1890/0012-9615(1997)067[0461:AYSOCA]2.0.CO;2.
- Davies SW, Matz MV, Vize PD. 2013. Ecological complexity of coral recruitment processes: effects of invertebrate herbivores on coral recruitment and growth depends upon substratum properties and coral species. *PLoS ONE* 8:e72830 DOI 10.1371/journal.pone.0072830.
- Davies SW, Rahman M, Meyer E, Green EA, Buschiazzo E, Medina M, Matz MV. 2013. Novel polymorphic microsatellite markers for population genetics of the endangered Caribbean star coral, *Montastraea faveolata*. *Marine Biodiversity* 43:167–172 DOI 10.1007/s12526-012-0133-4.
- De'ath G, Fabricius KE, Sweatman H, Puotinen M. 2012. The 27-year decline of coral cover on the Great Barrier Reef and its causes. *Proceedings of the National Academy of Sciences of the United States of America* 109:17995–17999 DOI 10.1073/pnas.1208909109.
- Doropoulos C, Diaz-Pulido G. 2013. High CO₂ reduces the settlement of a spawning coral on three common species of crustose coralline algae. *Marine Ecology Progress Series* 475:93–99 DOI 10.3354/meps10096.
- Doropoulos C, Ward S, Diaz-Pulido G, Hoegh-Guldberg O, Mumby PJ. 2012. Ocean acidification reduces coral recruitment by disrupting intimate larval-algal settlement interactions. *Ecology Letters* 15:338–346 DOI 10.1111/j.1461-0248.2012.01743.x.
- Gardner TA, Cote IM, Gill JA, Grant A, Watkinson AR. 2003. Coral reef decline in the Caribbean—Response. *Science* 302:392–393.
- Gascuel O. 1997. BIONJ: an improved version of the NJ algorithm based on a simple model of sequence data. *Molecular Biology and Evolution* 14:685–695 DOI 10.1093/oxfordjournals.molbev.a025808.
- Golbuu Y, Richmond RH. 2007. Substratum preferences in planula larvae of two species of scleractinian corals. *Goniastrea retiformis* and *Stylaraea punctata*. *Marine Biology* 152:639–644 DOI 10.1007/s00227-007-0717-x.
- Golbuu Y, Victor S, Penland L, Idip D, Emaurois C, Okaji K, Yukihiro H, Iwase A, van Woesik R. 2007. Palau's coral reefs show differential habitat recovery following the 1998-bleaching event. *Coral Reefs* 26:319–332 DOI 10.1007/s00338-007-0200-7.
- Green DH, Edmunds PJ, Carpenter RC. 2008. Increasing relative abundance of *Porites astreoides* on Caribbean reefs mediated by an overall decline in coral cover. *Marine Ecology Progress Series* 359:1–10 DOI 10.3354/meps07454.
- Harrington L, Fabricius K, De'Ath G, Negri A. 2004. Recognition and selection of settlement substrata determine post-settlement survival in corals. *Ecology* 85:3428–3437 DOI 10.1890/04-0298.
- Harrison PLW, CC. 1990. *Reproduction, dispersal and recruitment of scleractinian corals*. Amsterdam: Elsevier Science Publications.
- Heyward AJ, Negri AP. 1999. Natural inducers for coral larval metamorphosis. *Coral Reefs* 18:273–279 DOI 10.1007/s003380050193.
- Hoegh-Guldberg O, Mumby PJ, Hooten AJ, Steneck RS, Greenfield P, Gomez E, Harvell CD, Sale PF, Edwards AJ, Caldeira K, Knowlton N, Eakin CM, Iglesias-Prieto R, Muthiga N, Bradbury RH, Dubi A, Hatziolos ME. 2007. Coral reefs under rapid climate change and ocean acidification. *Science* 318:1737–1742 DOI 10.1126/science.1152509.
- Huang Y, Niu BF, Gao Y, Fu LM, Li WZ. 2010. CD-HIT Suite: a web server for clustering and comparing biological sequences. *Bioinformatics* 26:680–682 DOI 10.1093/bioinformatics/btq003.

- Hughes TP, Tanner JE. 2000.** Recruitment failure, life histories, and long-term decline of Caribbean corals. *Ecology* **81**:2250–2263
DOI [10.1890/0012-9658\(2000\)081\[2250:RFLHAL\]2.0.CO;2](https://doi.org/10.1890/0012-9658(2000)081[2250:RFLHAL]2.0.CO;2).
- Idjadi JA, Lee SC, Bruno JF, Precht WF, Allen-Requa L, Edmunds PJ. 2006.** Rapid phase-shift reversal on a Jamaican coral reef. *Coral Reefs* **25**:209–211 DOI [10.1007/s00338-006-0088-7](https://doi.org/10.1007/s00338-006-0088-7).
- Jari Oksanen FGB, Roeland Kindt Pierre, Legendre PRM, O’Hara RB, Simpson Gavin L.** Peter Solymos MHHSaHW (2013) vegan: Community Ecology Package. R package version 2.0-7.
- Katoh K, Standley DM. 2013.** MAFFT multiple sequence alignment software version 7: improvements in performance and usability. *Molecular Biology and Evolution* **30**:772–780
DOI [10.1093/molbev/mst010](https://doi.org/10.1093/molbev/mst010).
- Kramer PA. 2003.** Synthesis of coral reef health indicators for the western Atlantic: results of the AGRRA program (1997–2000). *Atoll Research Bulletin* **496**:3:1–57
DOI [10.5479/si.00775630.496-3.1](https://doi.org/10.5479/si.00775630.496-3.1).
- Levitan DR, Fukami H, Jara J, Kline D, McGovern TM, McGhee KE, Swanson CA, Knowlton N. 2004.** Mechanisms of reproductive isolation among sympatric broadcast-spawning corals of the *Montastraea annularis* species complex. *Evolution* **58**:308–323.
- Maida M, Coll JC, Sammarco PW. 1994.** Shedding new light on scleractinian coral recruitment. *Journal of Experimental Marine Biology and Ecology* **180**:189–202
DOI [10.1016/0022-0981\(94\)90066-3](https://doi.org/10.1016/0022-0981(94)90066-3).
- Meyer E, Davies S, Wang S, Willis BL, Abrego D, Juenger TE, Matz MV. 2009.** Genetic variation in responses to a settlement cue and elevated temperature in the reef-building coral *Acropora millepora*. *Marine Ecology Progress Series* **392**:81–92 DOI [10.3354/meps08208](https://doi.org/10.3354/meps08208).
- Morse ANC, Iwao K, Baba M, Shimoike K, Hayashibara T, Omori M. 1996.** An ancient chemosensory mechanism brings new life to coral reefs. *Biological Bulletin* **191**:149–154
DOI [10.2307/1542917](https://doi.org/10.2307/1542917).
- Morse DE, Morse ANC. 1988.** Chemical signals and molecular mechanisms—learning from larvae. *Oceanus* **31**:37–43.
- Mundy CN, Babcock RC. 1998.** Role of light intensity and spectral quality in coral settlement: implications for depth-dependent settlement? *Journal of Experimental Marine Biology and Ecology* **223**:235–255 DOI [10.1016/S0022-0981\(97\)00167-6](https://doi.org/10.1016/S0022-0981(97)00167-6).
- Negri AP, Webster NS, Hill RT, Heyward AJ. 2001.** Metamorphosis of broadcast spawning corals in response to bacteria isolated from crustose algae. *Marine Ecology Progress Series* **223**:121–131
DOI [10.3354/meps223121](https://doi.org/10.3354/meps223121).
- Nugues MM, Szmant AM. 2006.** Coral settlement onto *Halimeda opuntia*: a fatal attraction to an ephemeral substrate? *Coral Reefs* **25**:585–591 DOI [10.1007/s00338-006-0147-0](https://doi.org/10.1007/s00338-006-0147-0).
- Price N. 2010.** Habitat selection, facilitation, and biotic settlement cues affect distribution and performance of coral recruits in French Polynesia. *Oecologia* **163**:747–758
DOI [10.1007/s00442-010-1578-4](https://doi.org/10.1007/s00442-010-1578-4).
- Ragazzola F, Foster LC, Form A, Anderson PSL, Hansteen TH, Fietzke J. 2012.** Ocean acidification weakens the structural integrity of coralline algae. *Global Change Biology* **18**:2804–2812 DOI [10.1111/j.1365-2486.2012.02756.x](https://doi.org/10.1111/j.1365-2486.2012.02756.x).
- Raimondi PT, Morse ANC. 2000.** The consequences of complex larval behavior in a coral. *Ecology* **81**:3193–3211 DOI [10.1890/0012-9658\(2000\)081\[3193:TCOCLB\]2.0.CO;2](https://doi.org/10.1890/0012-9658(2000)081[3193:TCOCLB]2.0.CO;2).
- R Development Core Team. 2013.** R: a language and environment for statistical computing. R Foundation for Statistical Computing, Vienna, Austria.

- Ritson-Williams R, Paul VJ, Arnold S, Steneck RS. 2010.** Larval settlement preferences and post-settlement survival of the threatened Caribbean corals *Acropora palmata* and *A. cervicornis*. *Coral Reefs* **29**:71–81 DOI [10.1007/s00338-009-0555-z](https://doi.org/10.1007/s00338-009-0555-z).
- Roff G, Mumby PJ. 2012.** Global disparity in the resilience of coral reefs. *Trends in Ecology and Evolution* **27**:404–413 DOI [10.1016/j.tree.2012.04.007](https://doi.org/10.1016/j.tree.2012.04.007).
- Smith JE, Price NN, Nelson CE, Haas AF. 2013.** Coupled changes in oxygen concentration and pH caused by metabolism of benthic coral reef organisms. *Marine Biology* **160**:2437–2447 DOI [10.1007/s00227-013-2239-z](https://doi.org/10.1007/s00227-013-2239-z).
- Tamburri MN, Zimmer RK, Zimmer CA. 2007.** Mechanisms reconciling gregarious larval settlement with adult cannibalism. *Ecological Monographs* **77**:255–268 DOI [10.1890/06-1074](https://doi.org/10.1890/06-1074).
- Tebben J, Tapiolas DM, Motti CA, Abrego D, Negri AP, Blackall LL, Steinberg PD, Harder T. 2011.** Induction of larval metamorphosis of the coral *Acropora millepora* by tetrabromopyrrole isolated from a *Pseudoalteromonas* bacterium. *PLoS ONE* **6**:e19082 DOI [10.1371/journal.pone.0019082](https://doi.org/10.1371/journal.pone.0019082).
- Tran C, Hadfield MG. 2011.** Larvae of *Pocillopora damicornis* (Anthozoa) settle and metamorphose in response to surface-biofilm bacteria. *Marine Ecology Progress Series* **433**:85–96 DOI [10.3354/meps09192](https://doi.org/10.3354/meps09192).
- Vermeij MJA. 2006.** Early life-history dynamics of Caribbean coral species on artificial substratum: the importance of competition, growth and variation in life-history strategy. *Coral Reefs* **25**:59–71 DOI [10.1007/s00338-005-0056-7](https://doi.org/10.1007/s00338-005-0056-7).
- Vidal R, Meneses I, Smith M. 2002.** Enhanced DNA extraction and PCR amplification of SSU ribosomal genes from crustose coralline algae. *Journal of Applied Phycology* **14**:223–227 DOI [10.1023/A:1019975409640](https://doi.org/10.1023/A:1019975409640).
- Vize PD, Embesi JA, Nickell M, Brown DP, Hagman DK. 2005.** Tight temporal consistency of coral mass spawning at the Flower Garden Banks, Gulf of Mexico, from 1997–2003. *Gulf of Mexico Science* **23**:107–114.
- Wakeford M, Done TJ, Johnson CR. 2008.** Decadal trends in a coral community and evidence of changed disturbance regime. *Coral Reefs* **27**:1–13 DOI [10.1007/s00338-007-0284-0](https://doi.org/10.1007/s00338-007-0284-0).
- Webster NS, Soo R, Cobb R, Negri AP. 2011.** Elevated seawater temperature causes a microbial shift on crustose coralline algae with implications for the recruitment of coral larvae. *The ISME Journal* **5**:759–770 DOI [10.1038/ismej.2010.152](https://doi.org/10.1038/ismej.2010.152).
- Webster NS, Uthicke S, Botte ES, Flores F, Negri AP. 2013.** Ocean acidification reduces induction of coral settlement by crustose coralline algae. *Global Change Biology* **19**:303–315 DOI [10.1111/gcb.12008](https://doi.org/10.1111/gcb.12008).