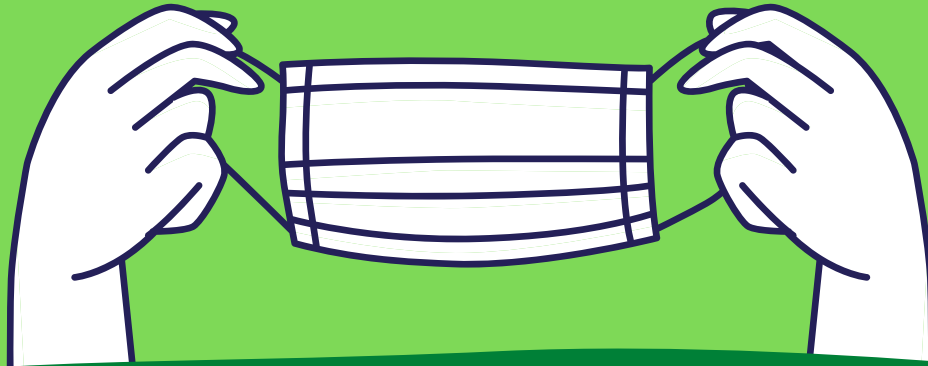


Guidance for the Use of Cloth Masks in K-12 Schools



- ✓ Encourage the wearing of cloth face masks as part of your school reopening plan, especially in situations where distancing is difficult to maintain
- ✓ Include several cloth face masks on school supply lists
- ✓ Have extra face masks on hand to provide to students, teachers, staff, and visitors as needed
- ✓ Provide face masks with a clear window to teachers and staff who interact with students who rely on lip reading to learn
- ✓ Ensure all cloth face masks are of high quality, fit closely to the face, and are made with 2-3 layers of fabric
- ✓ Educate students, parents, teachers, and staff on the correct use of cloth face masks
 - Wash or sanitize hands before putting face mask on
 - Avoid touching face mask while wearing it
 - Wash face masks between uses
- ✓ Cloth face masks should be stored in separate spaces designated for each student when not being worn, and should not be shared or swapped
- ✓ Face shields are not a replacement for face masks - cloth face masks should be worn even when wearing a face shield

