

**Submitting Samples to 500 MHz Spectrometer Using VNMRJ-3.2-A**  
**Log in** to your user account and **add your samples to sample changer** as usual – **do not put your sample into the slot above the yellow triangle (this belongs to the sample that is already in the probe).** **You can submit to a GREY, GREEN or RED slots ONLY.**

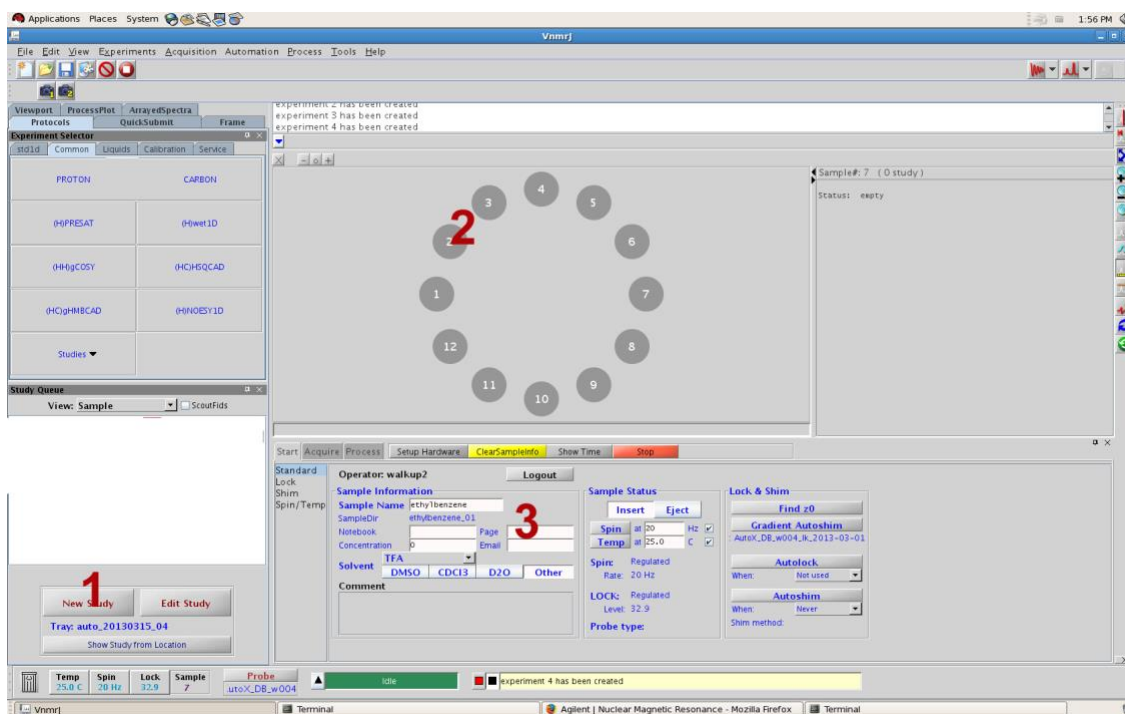


Figure 1

1. Click **New Study (Figure1)** to enter *Submit Mode*.
2. Click the location in the sample tray that corresponds to your sample. The selected sample location will now show a flashing highlighted ring.
3. In the **Start>SampleInfo** tab fill in the sample information: **SAMPLE NAME, SOLVENT**. **NOTE: Sample names must not contain symbols, spaces and periods. Stick to letters, number, hyphen or underscore only.**
4. **Check** either the **DayQ** or **NightQ** option. You need to do this part first before selecting experiments you want to run [Figure 2]
5. Click on the button(s) in the **Experimental Selector** (such as **PROTON** or **CARBON**) that corresponds to the experiments that you wish to collect on your sample. *Note you can add as many experiments as you want to run for this sample if time allows.*
6. Each Experiment will be added to the **Study Queue** as individual nodes.
7. Double click on these nodes to change the number of scans and other acquisition parameters in the **Acquire>Default** tabs (Figure 3)
8. Click the **Submit** button to add your study to the queue and acquire data.

9. If you have another sample to queue simply change the name of your sample in the **Start>Standard** tab, select the correct solvent and if you are running the same experiment just click the submit button to queue that sample. If you are running a different experiment (for example, if you submitted a proton previously but you now want to run a carbon with the next sample) drag the current experiment in the **Study Queue** to the trash can and select the new experiment from the **Experiment Selector**. You can then change the number of scans as in **Step 7** above and submit that sample.
10. Once you are done submitting all your samples you may log out of the VNMRJ software by pressing the **logout button** in the **Start>SampleInfo** tab.

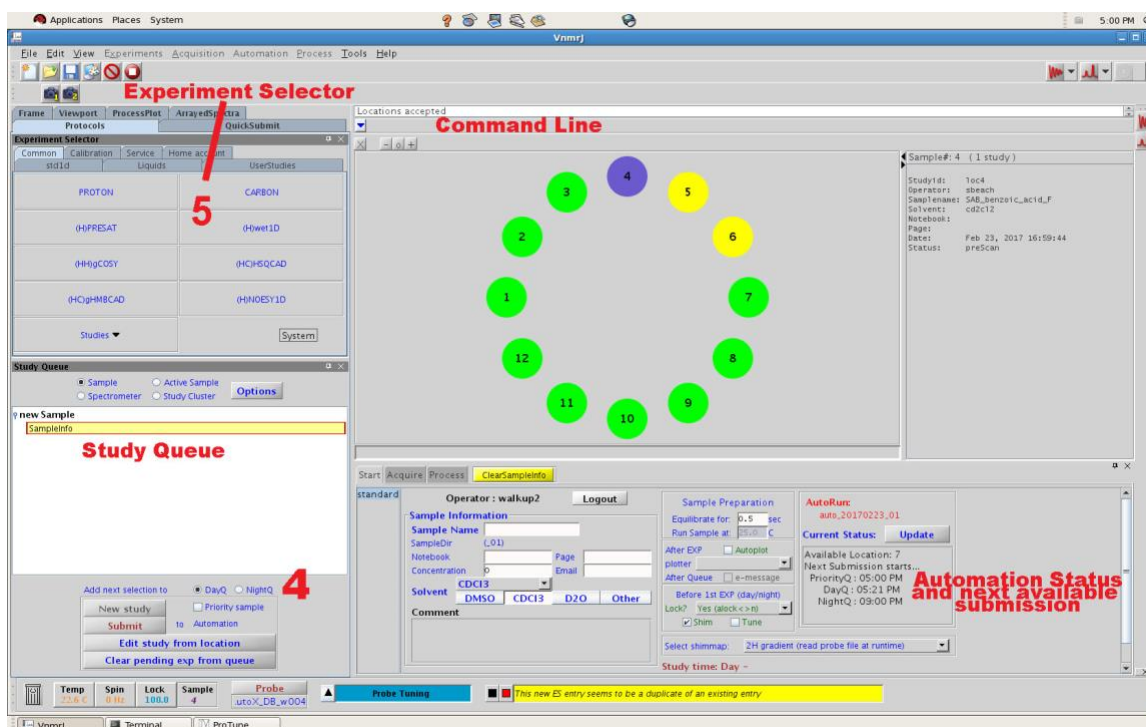


Figure 2

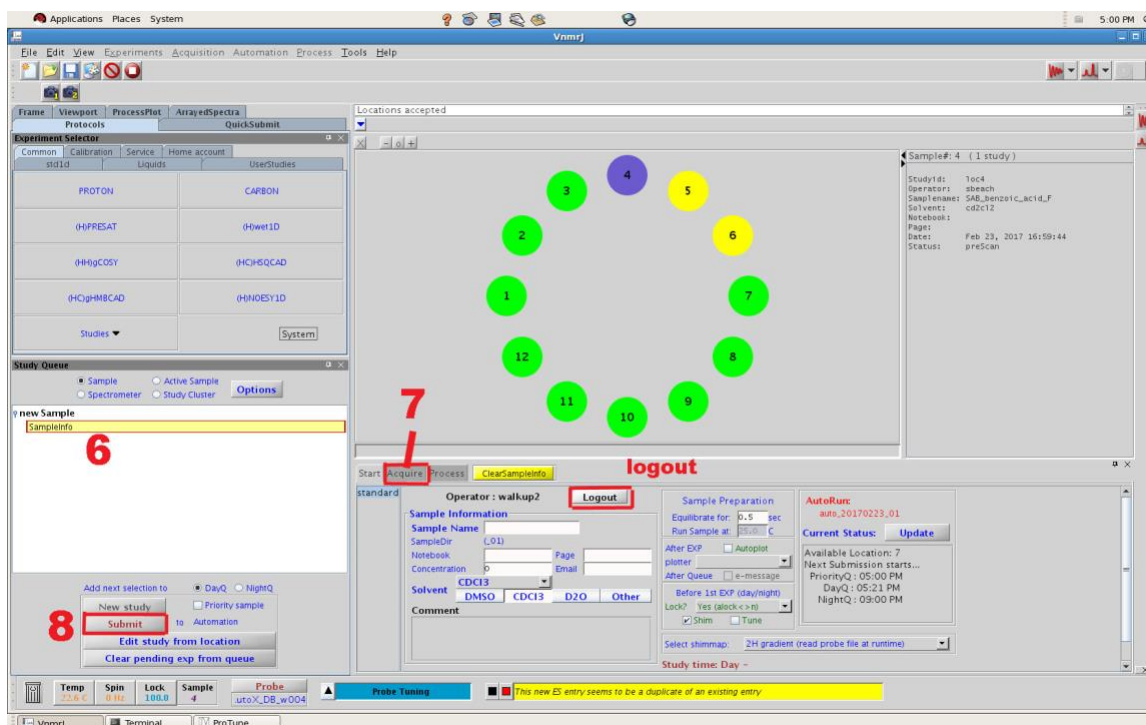


Figure 3

Once your experiments are done, the NMR will eject your sample. During the eject process, you will see your sample bounce up and down in the sample changer. **Do not remove your sample at this stage.** Wait for the eject process to complete and your sample stops moving before you take your sample out of the sample changer.