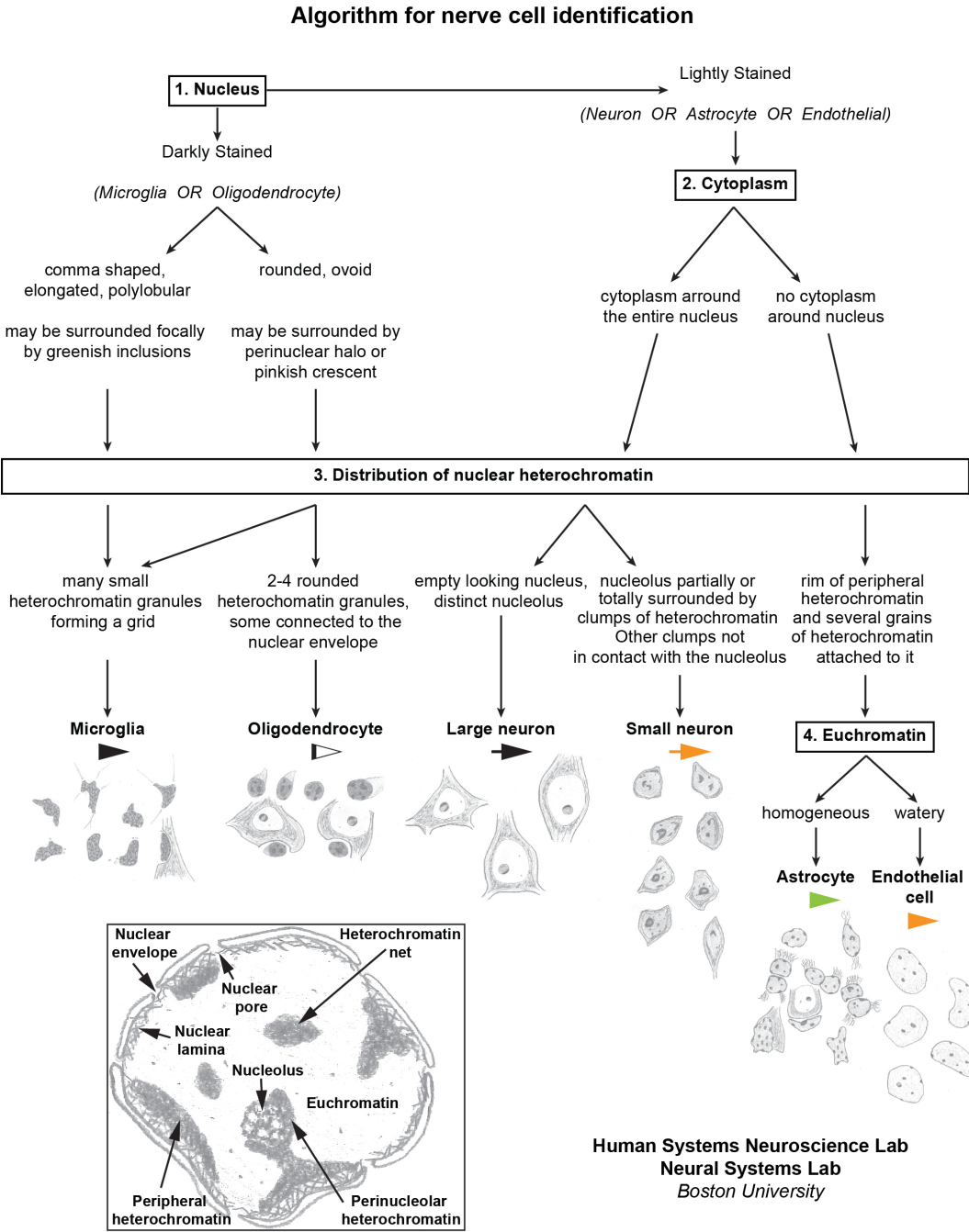


**Brief instructions:**

- 1. Read and print the Neurocytology Algorithm**
- 2. Take the test**
- 3. Record your answers in the first worksheet (Your Results)**
- 4. Compare with our results and see how you did in the second worksheet (Compare with our results)**



**Brief instructions:**

- 1. Read and print the Neurocytology Algorithm**
- 2. Take the test**

NeurocytologyTest-Final.pdf - Adobe Acrobat Reader DC

File Edit View Window Help

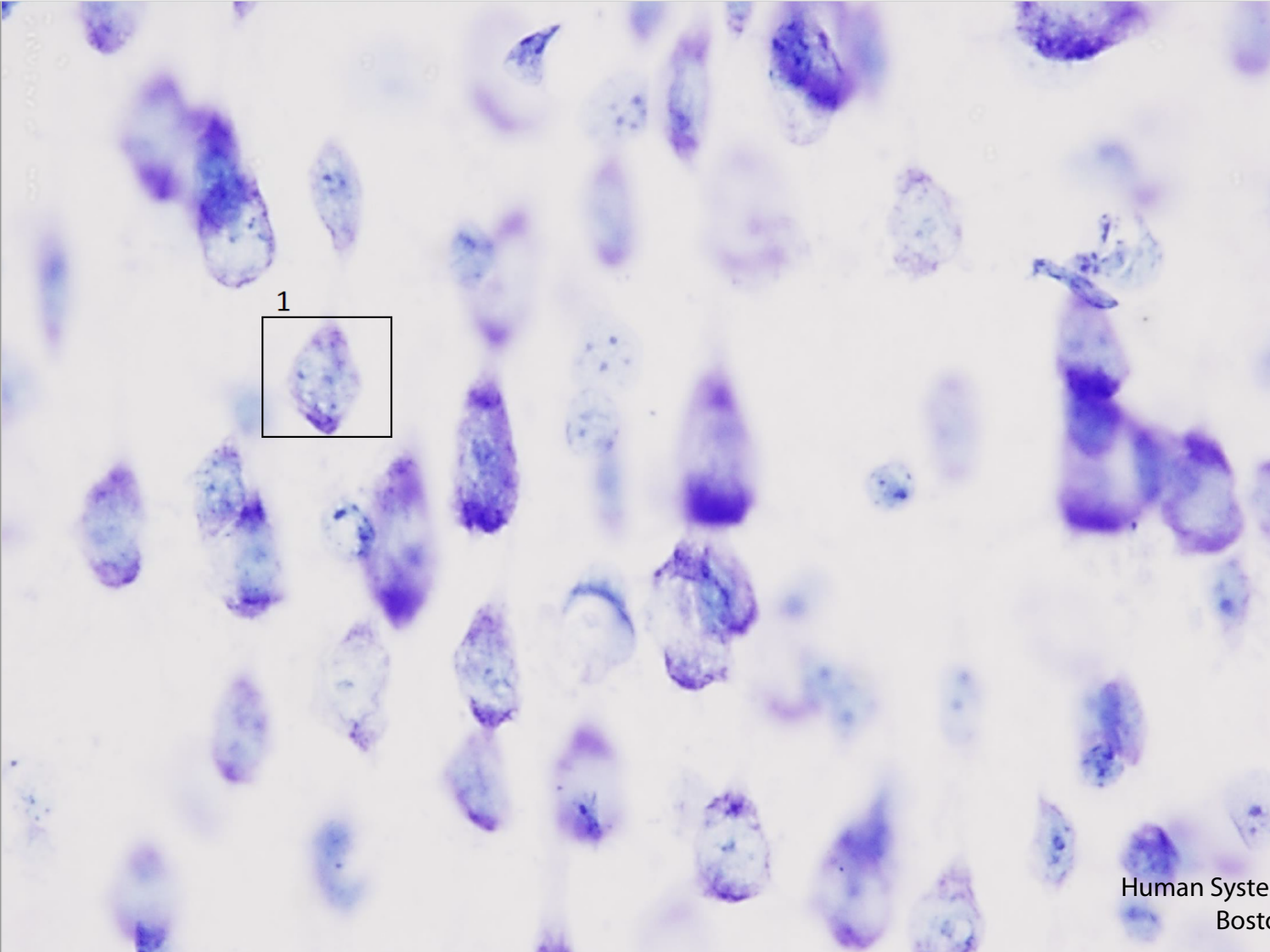
Home Tools

NeurocytologyTest...

1 / 20


125%

Sign In



A microscopic image showing numerous cells with purple nuclei and light blue cytoplasm. A black box labeled '1' highlights a single cell in the center-left area.

Human Systems Neuroscience Lab  
Boston University



Windows taskbar showing icons for various applications including Internet Explorer, Google Chrome, and Adobe Acrobat.

EN 6:12 PM 9/15/2016

Brief instructions:

- 1. Read and print the Neurocytology Algorithm
- 2. Take the test
- 3. Record your answers in the first worksheet (Your Results)

NeurocytologyTest.xlsx - Excel

FILEHOMEINSERTPAGE LAYOUTFORMULASDATAREVIEWVIEWDEVELOPERAcrobat

CutCopyFormat PainterClipboard

Calibri11FontStrikethrough

Alignment

GeneralNumber

Conditional FormattingFormat as Table

NormalBadGoodNeutralCalculationCheck CellExplanatory...InputLinked CellNote

InsertDeleteFormatCells

AutoSumFillClearSort & Find & FilterSelectEditing

	A	B	C	D	E	F	G	H	I	J	K	L	M	N	O	P	Q	R	S	T	U	V	W	X	Y	Z	AA	AB	AC
1		Neuron	Astro	Oligo	Micro	Endothel	Doubt																						
2	Example input for neuron	1	0	0	0	0	0																						
3	1	1																											
4	2	1																											
5	3	1																											
6	4	1																											
7	5	1																											
8	6	1																											
9	7		1																										
10	8			1																									
11	9				1																								
12	10					1																							
13	11		1																										
14	12			1																									
15	13				1																								
16	14				1																								
17	15					1																							
18	16					1																							
19	17					1																							
20	18					1																							
21	19				1																								
22	20				1																								
23	21				1																								
24	22				1																								
25	23	1																											
26	24	1																											
27	25	1																											
28	26	1																											
29	27	1																											
30	28		1																										
31	29		1																										
32	30		1																										
33	31			1																									
34	32			1																									
35	33			1																									
36	34				1																								
37	35				1																								
38	36				1																								
39	37					1																							
40	38					1																							
41	39					1																							
42	40						1																						
43	41						1																						
44	42						1																						
45	43	1																											

Human Systems Neuroscience Lab  
Boston University

**4. Compare with our results and see how you did in the second worksheet (Compare with our results)**

The screenshot displays an Excel spreadsheet titled "NeurocytologyTest.xlsx". The interface includes the standard Excel ribbon with tabs for FILE, HOME, INSERT, PAGE LAYOUT, FORMULAS, DATA, REVIEW, VIEW, DEVELOPER, and Acrobat. The HOME tab is active, showing options for Clipboard, Font, Strikethrough, Alignment, Number, Styles, Cells, and Editing.

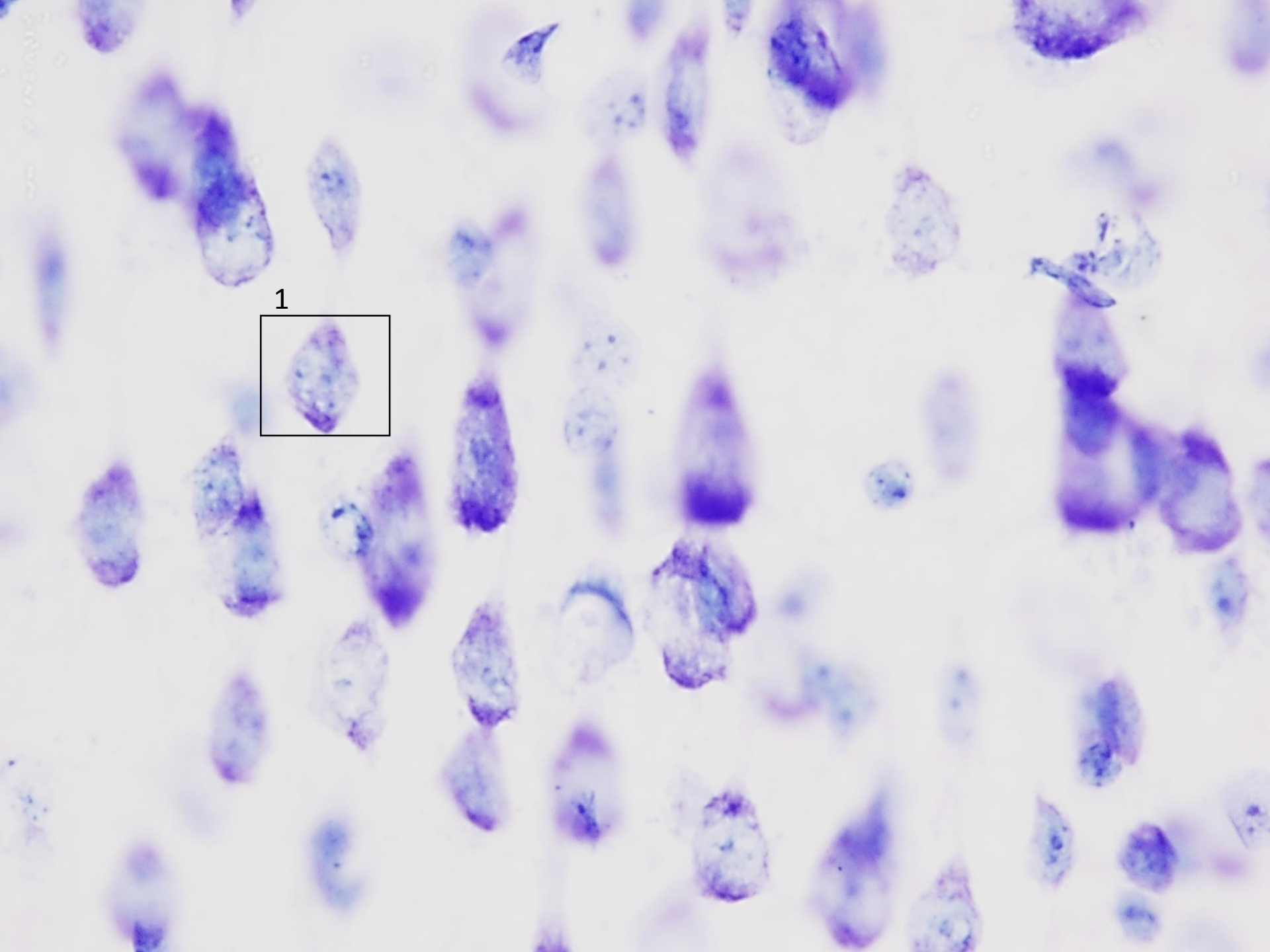
The spreadsheet contains two main data tables. The first table, "Our Results", is located in the range A1:J43. It has columns for "Neuron", "Astro", "Oligo", "Micro", "Endothel", and "Doubt". The second table, "Compare With Our Results", is located in the range M1:Q43. It has columns for "Neuron", "Astro", "Oligo", "Micro", "Endothel", and "Doubt".

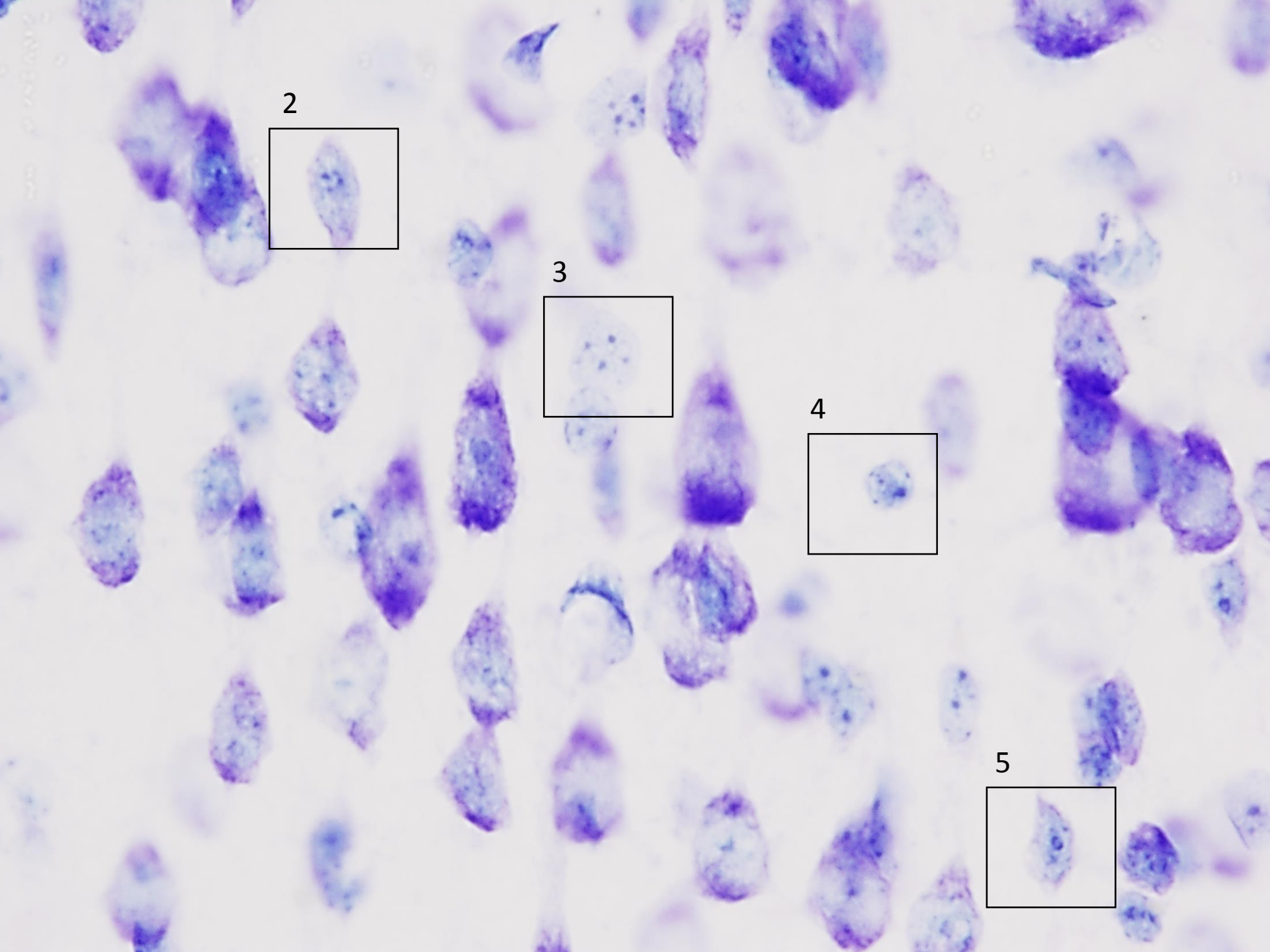
The "Our Results" table shows a series of 1s and 0s for each cell type across 43 rows. The "Compare With Our Results" table shows a series of 1s and 0s for each cell type across 43 rows. The "Doubt" column in both tables is mostly empty.

At the bottom right of the spreadsheet, the text "Human Systems Neuroscience Lab Boston University" is visible.



# TEST



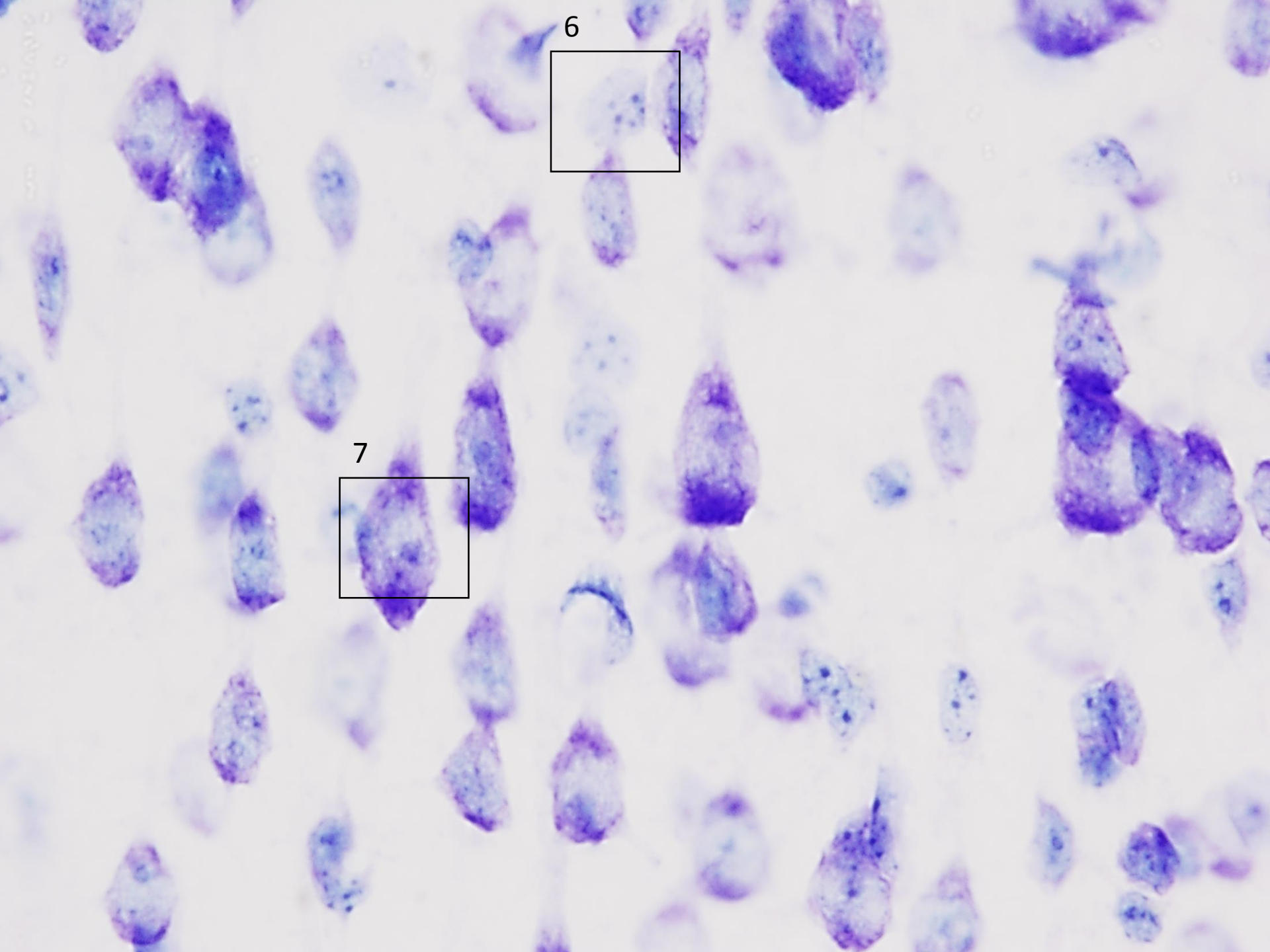


2

3

4

5

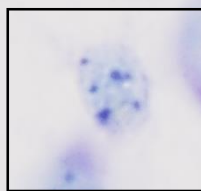


6

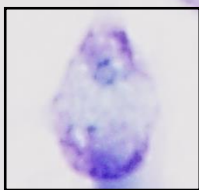
7



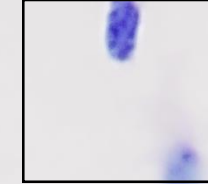
8



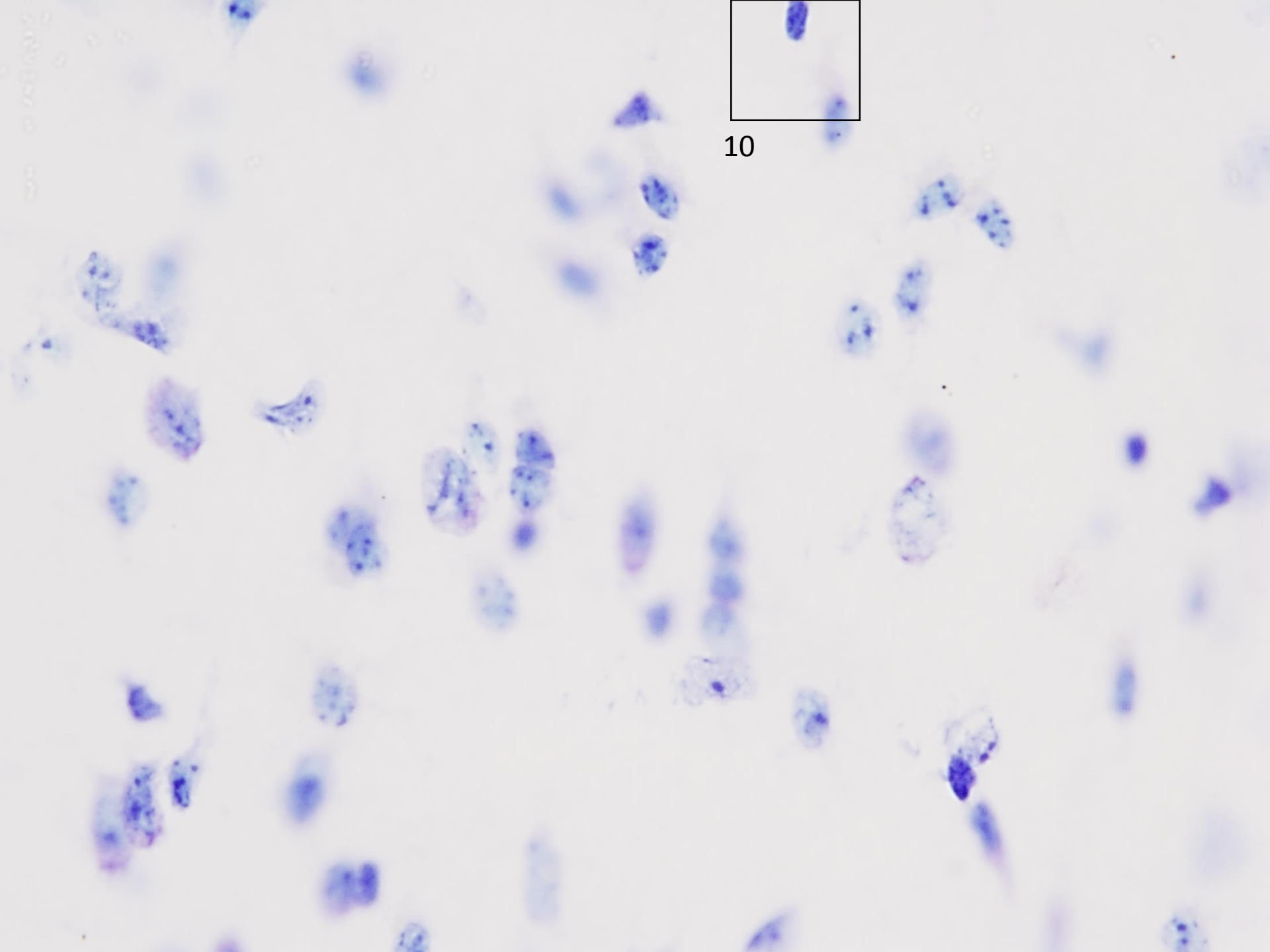
9

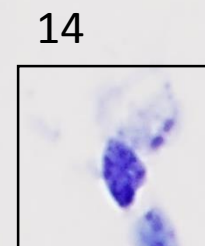
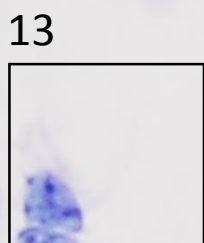
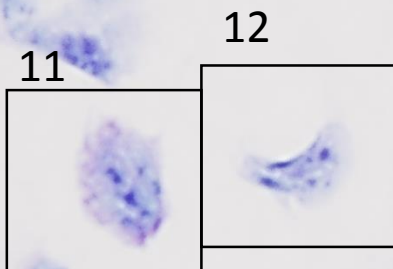




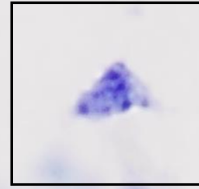


10

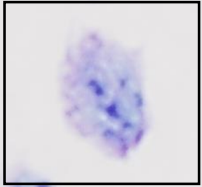


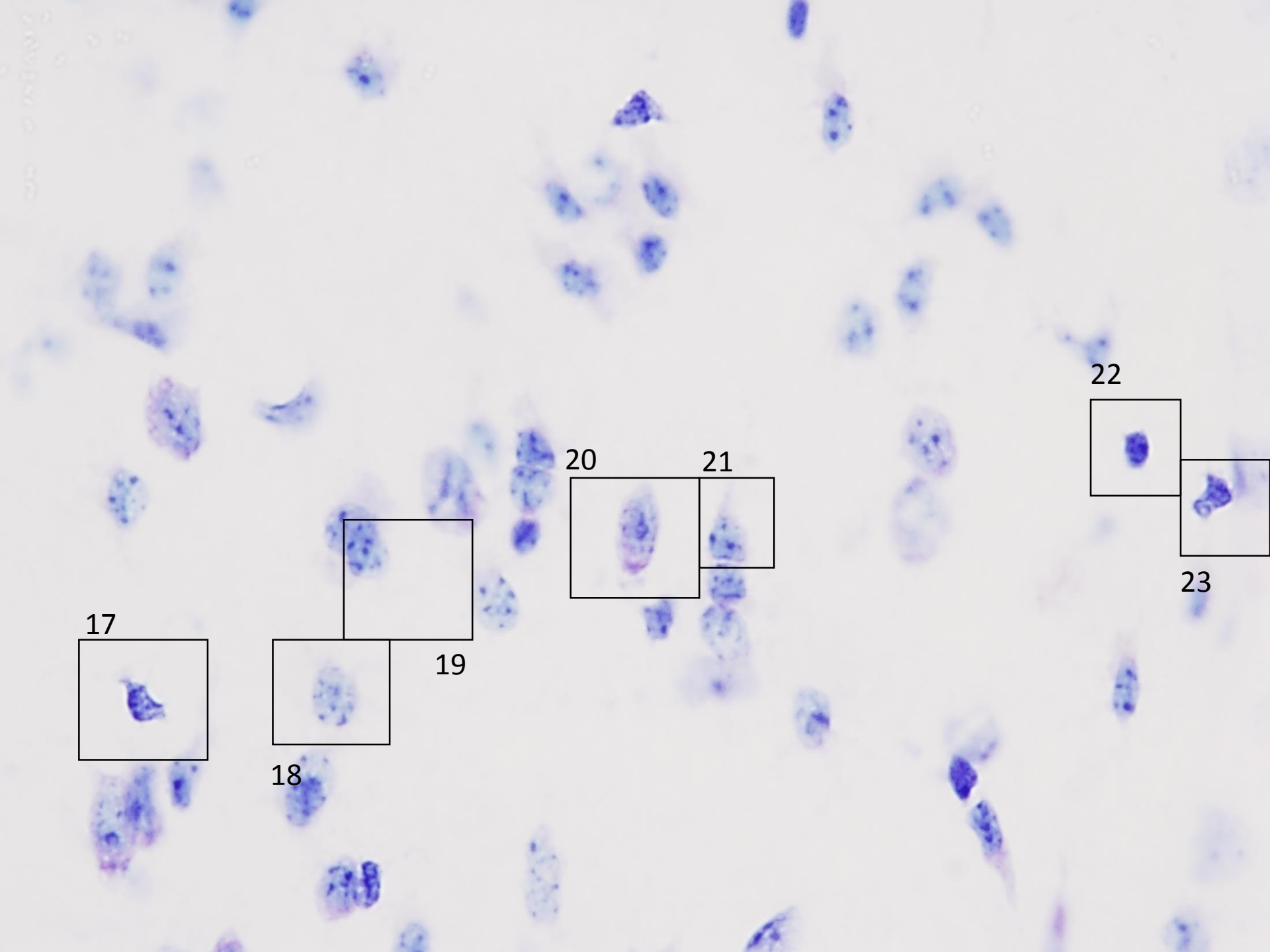


15

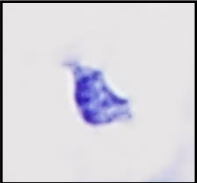


16

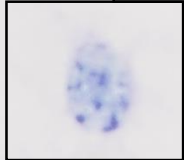




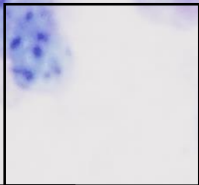
17



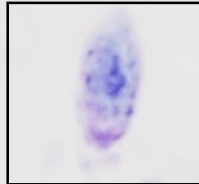
18



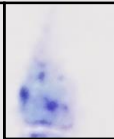
19



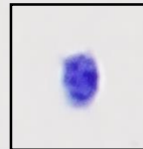
20



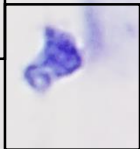
21

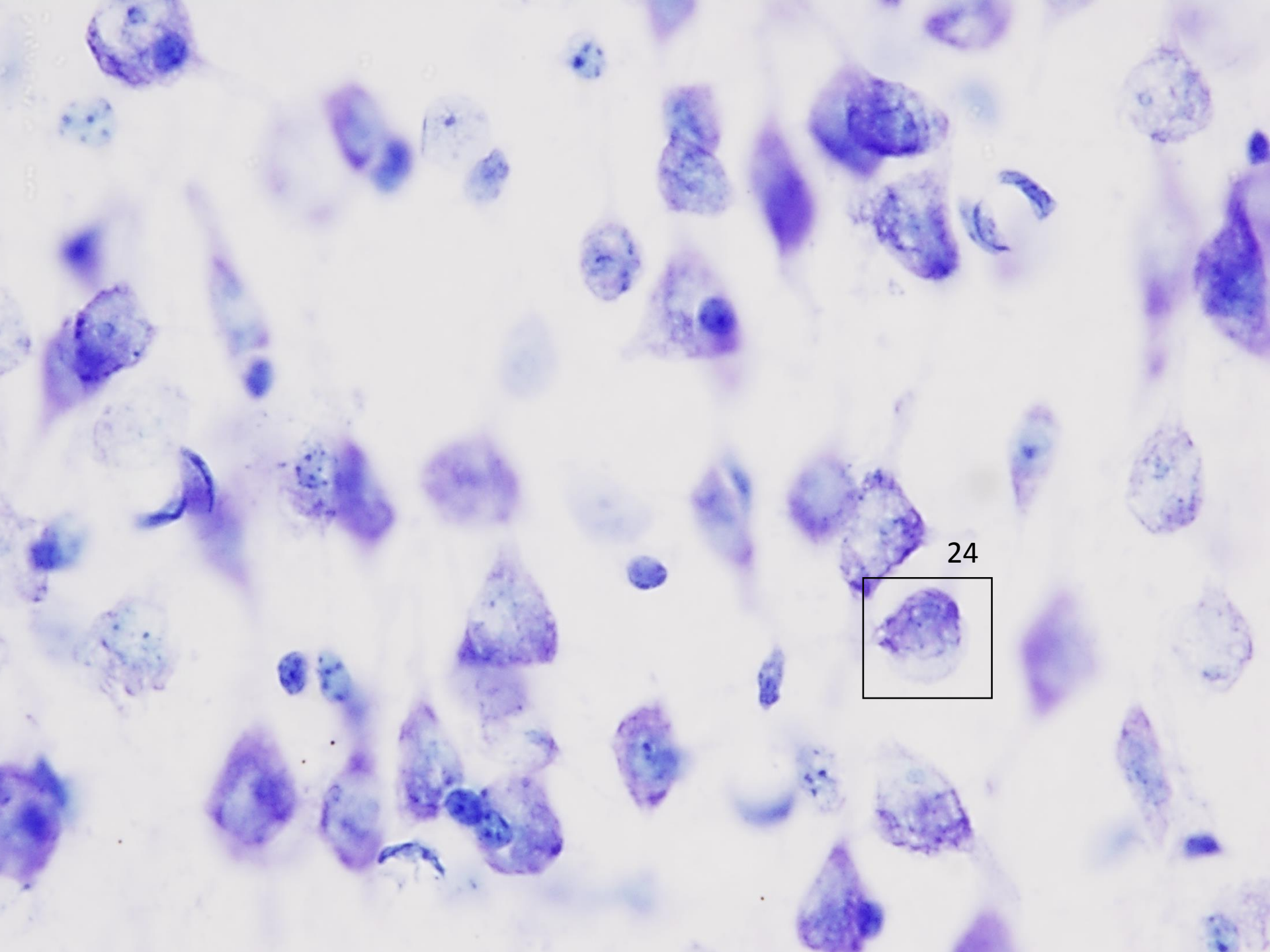


22



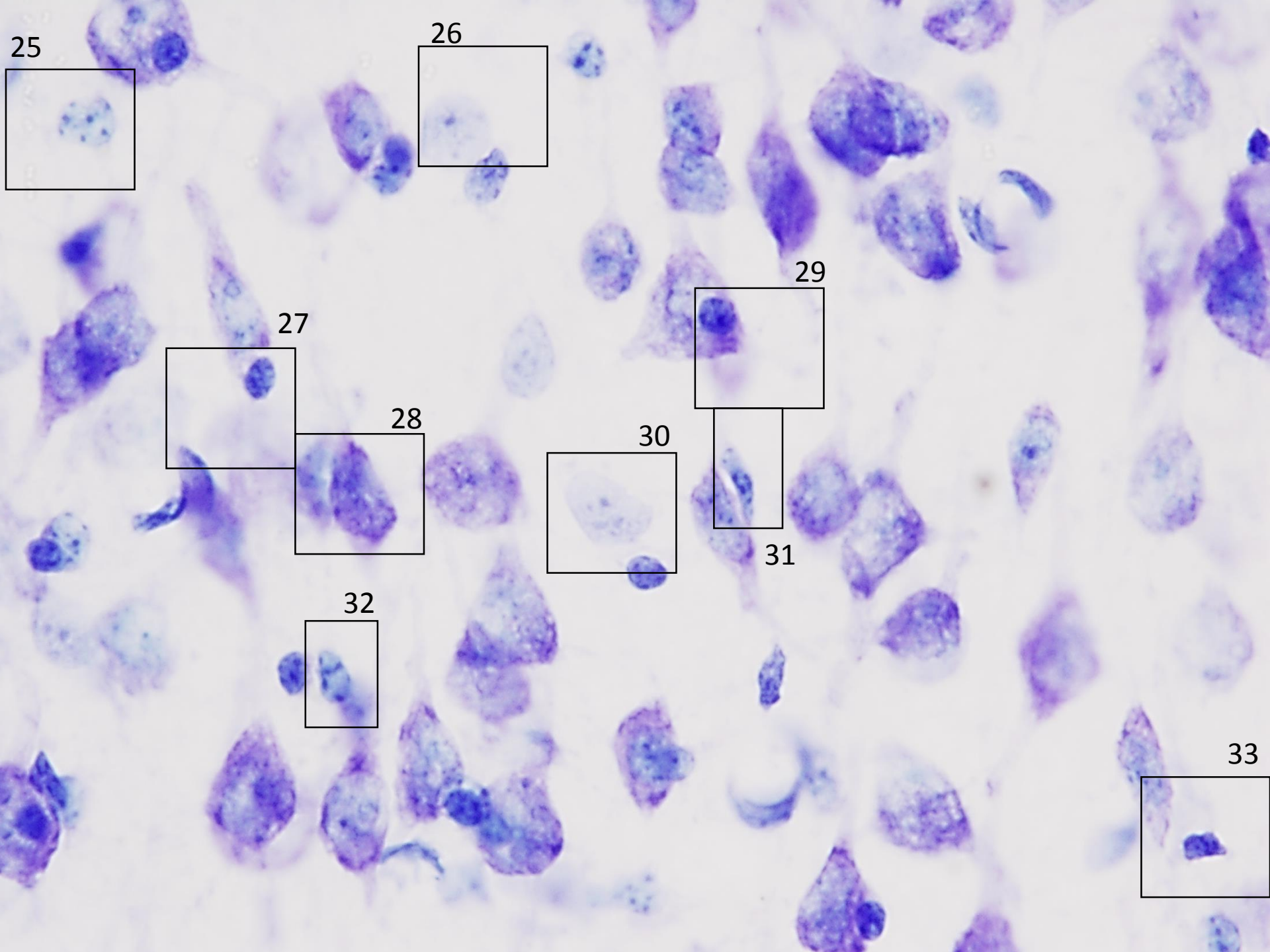
23





24





25

26

29

27

28

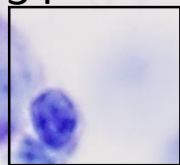
30

31

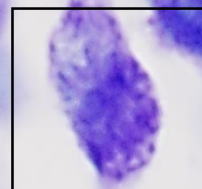
32

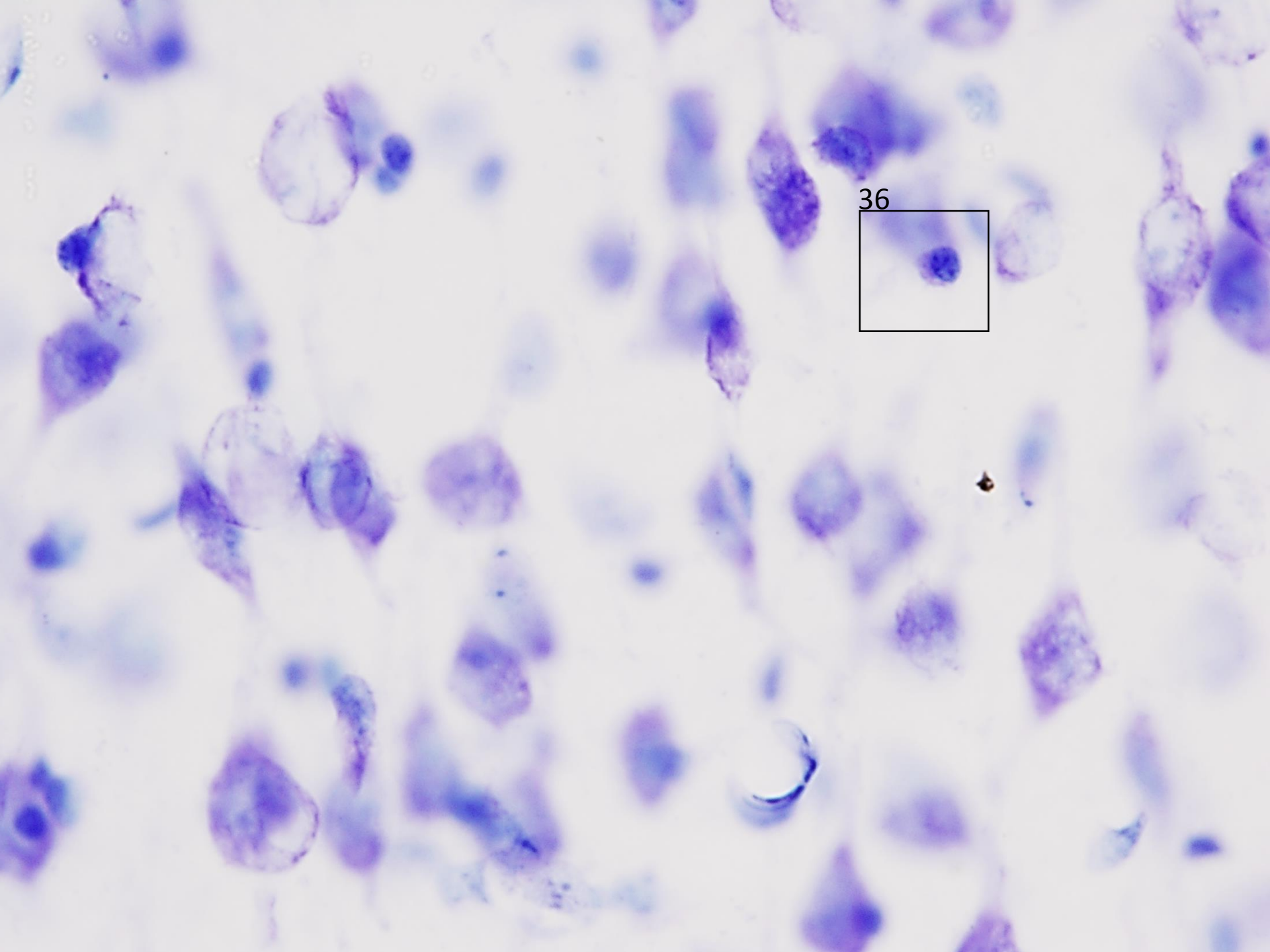
33

34

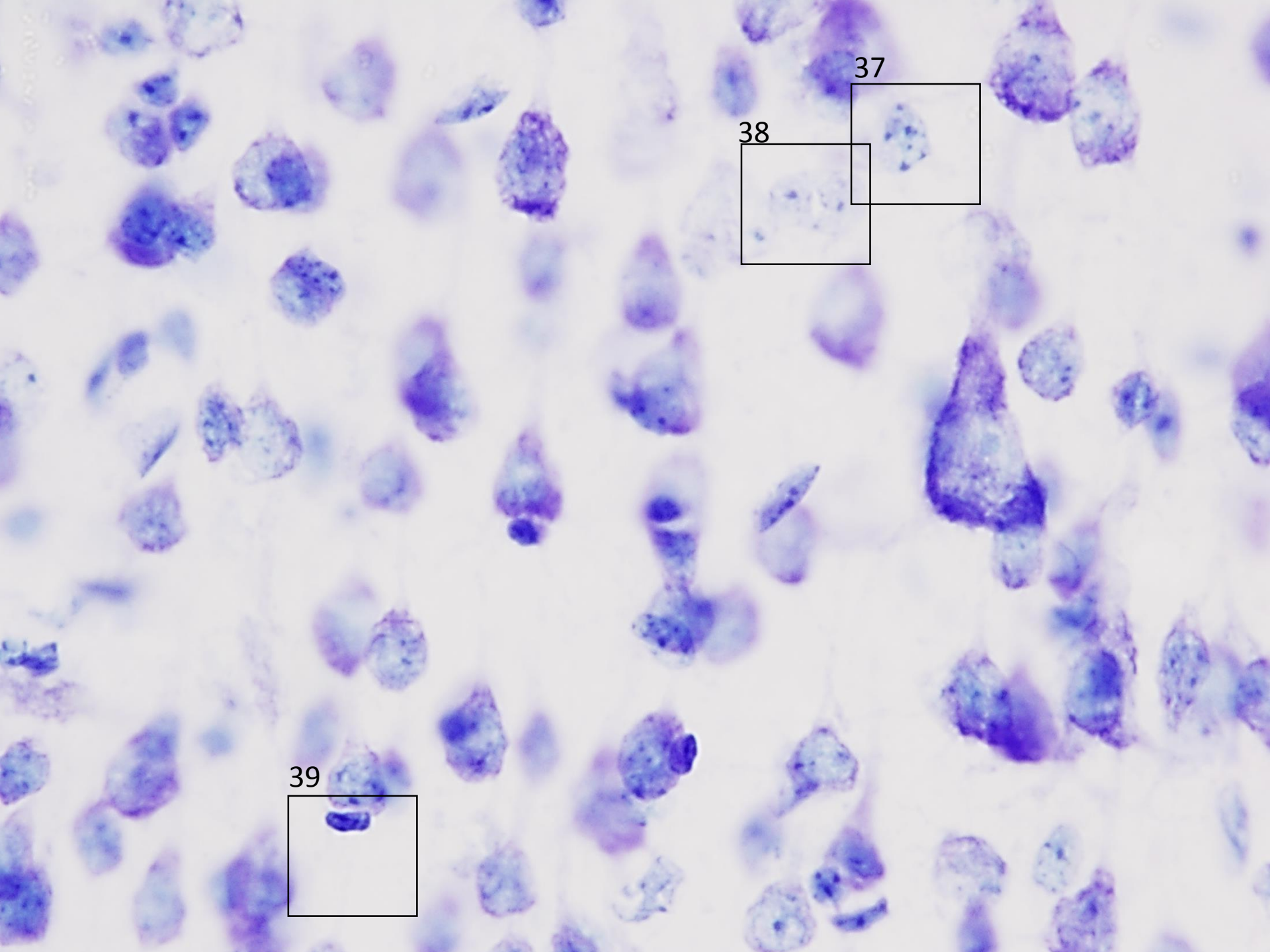


35









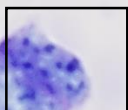
37

38

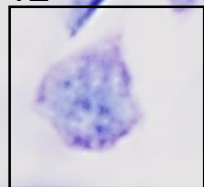
39



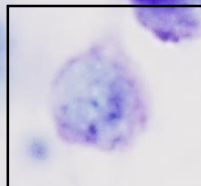
40



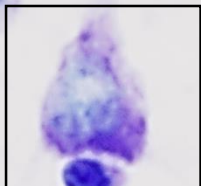
41



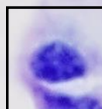
42



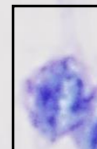
43



44

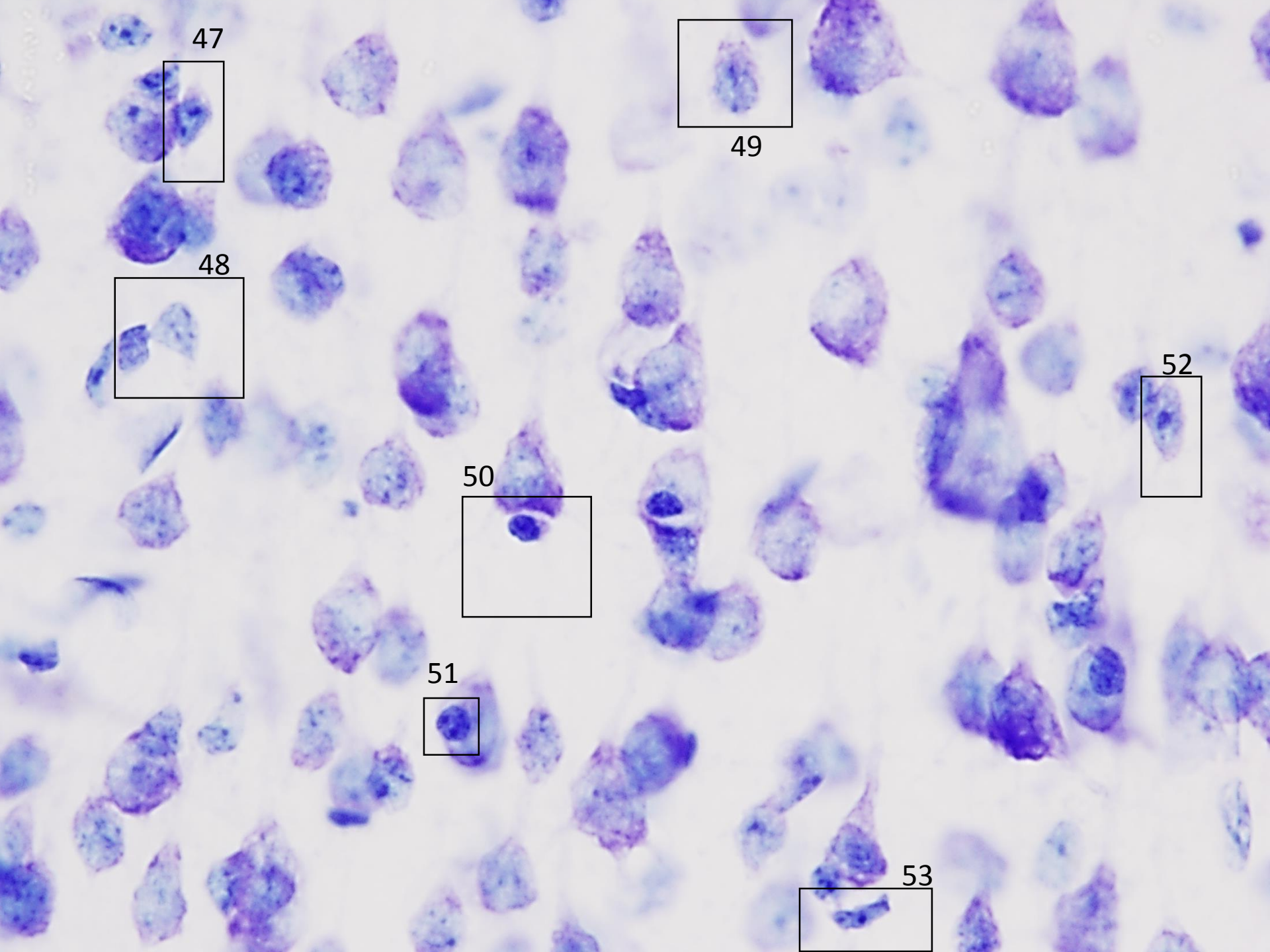


45

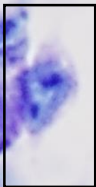


46

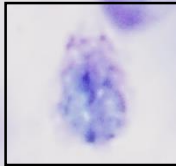




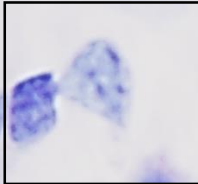
47



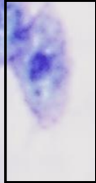
49



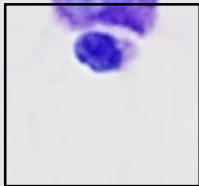
48



52



50

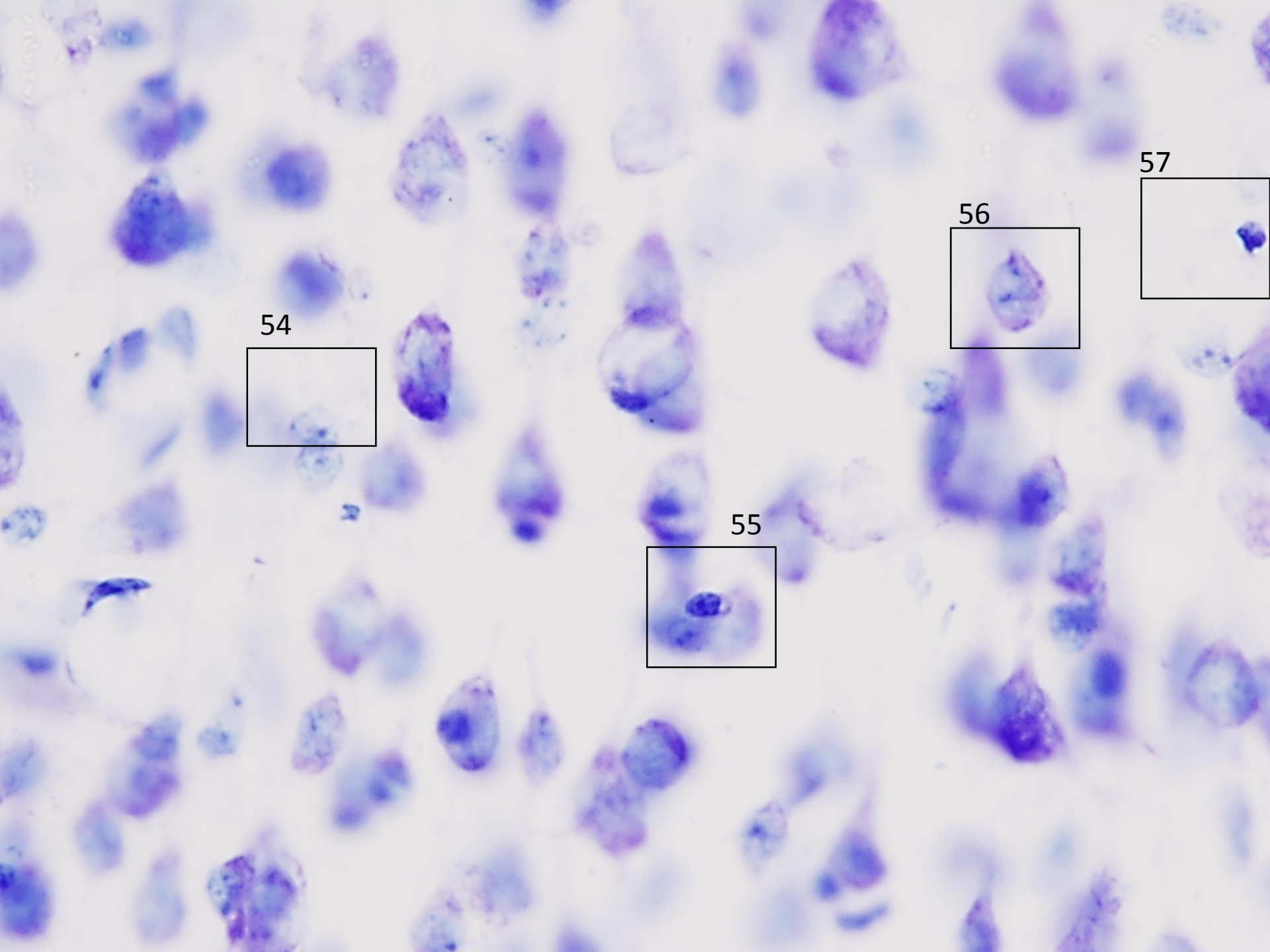


51



53





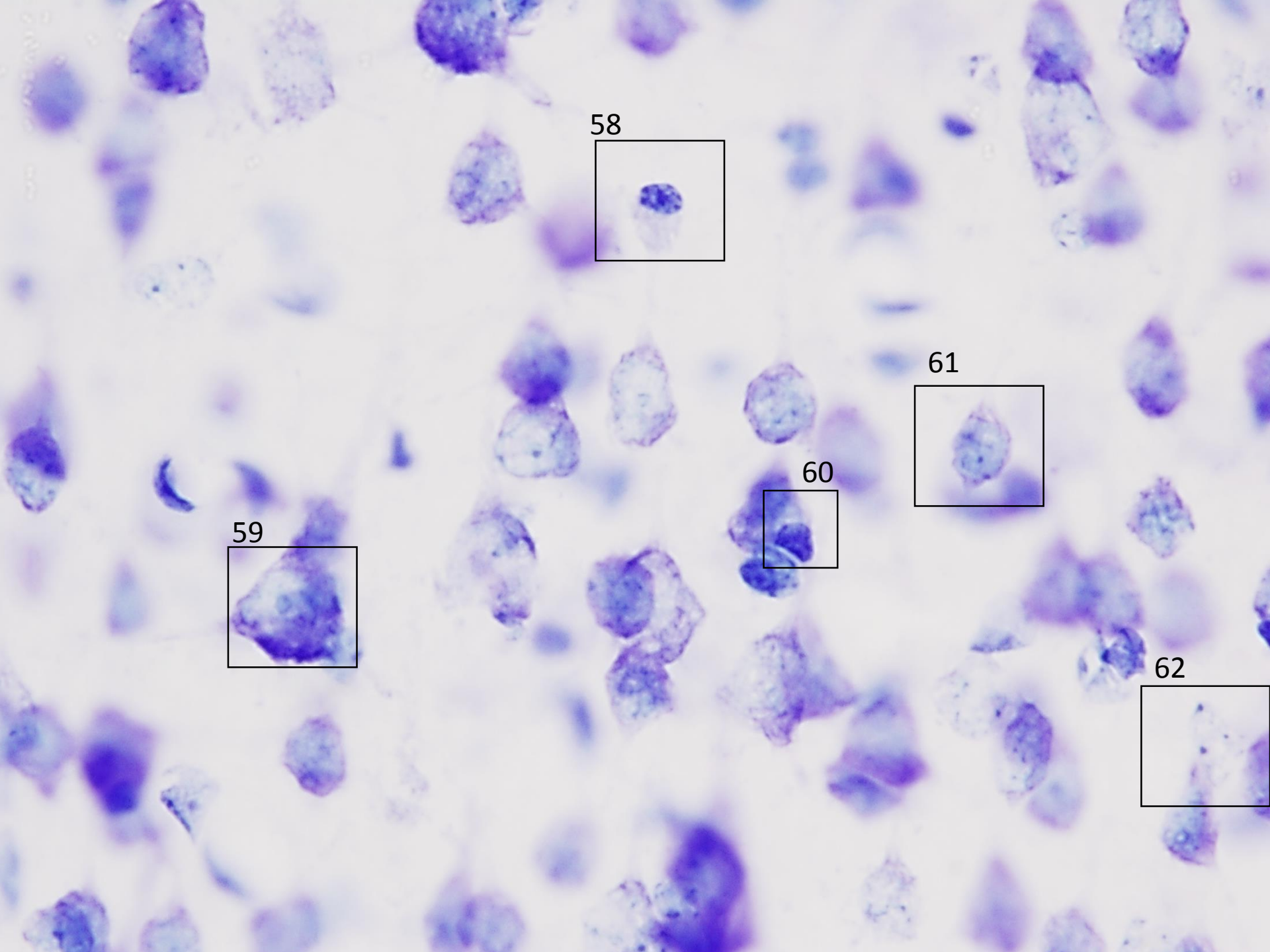
54

55

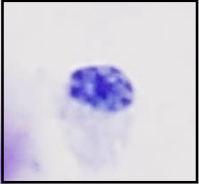
56

57

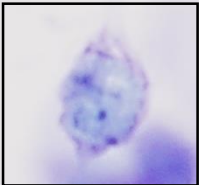




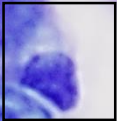
58



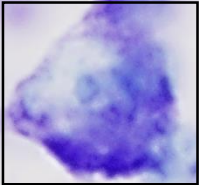
61



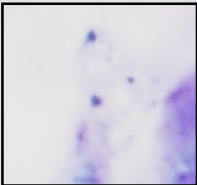
60

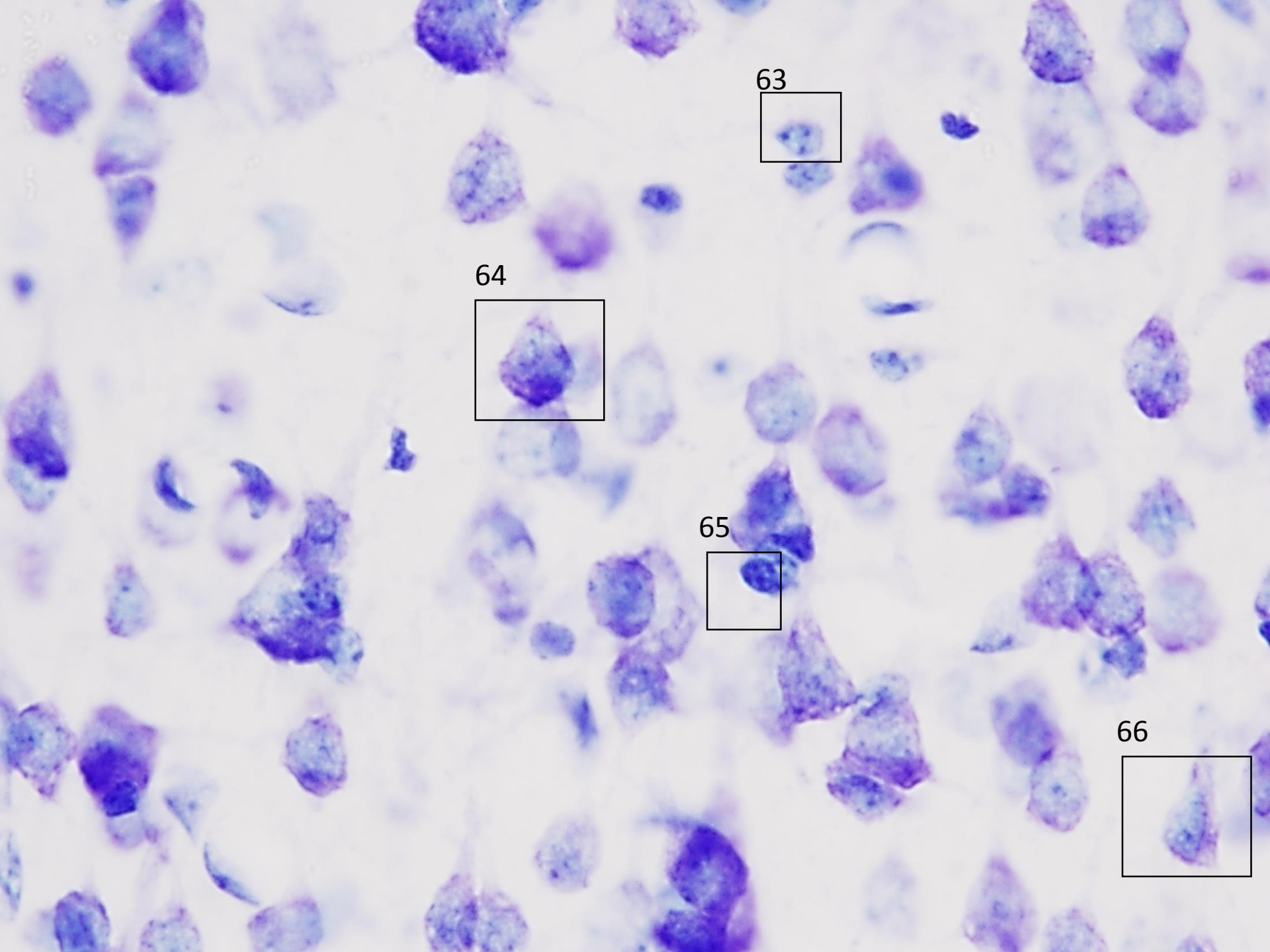


59

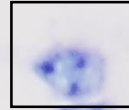


62

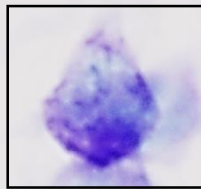




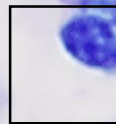
63



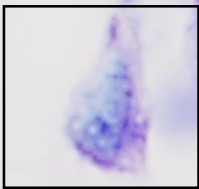
64



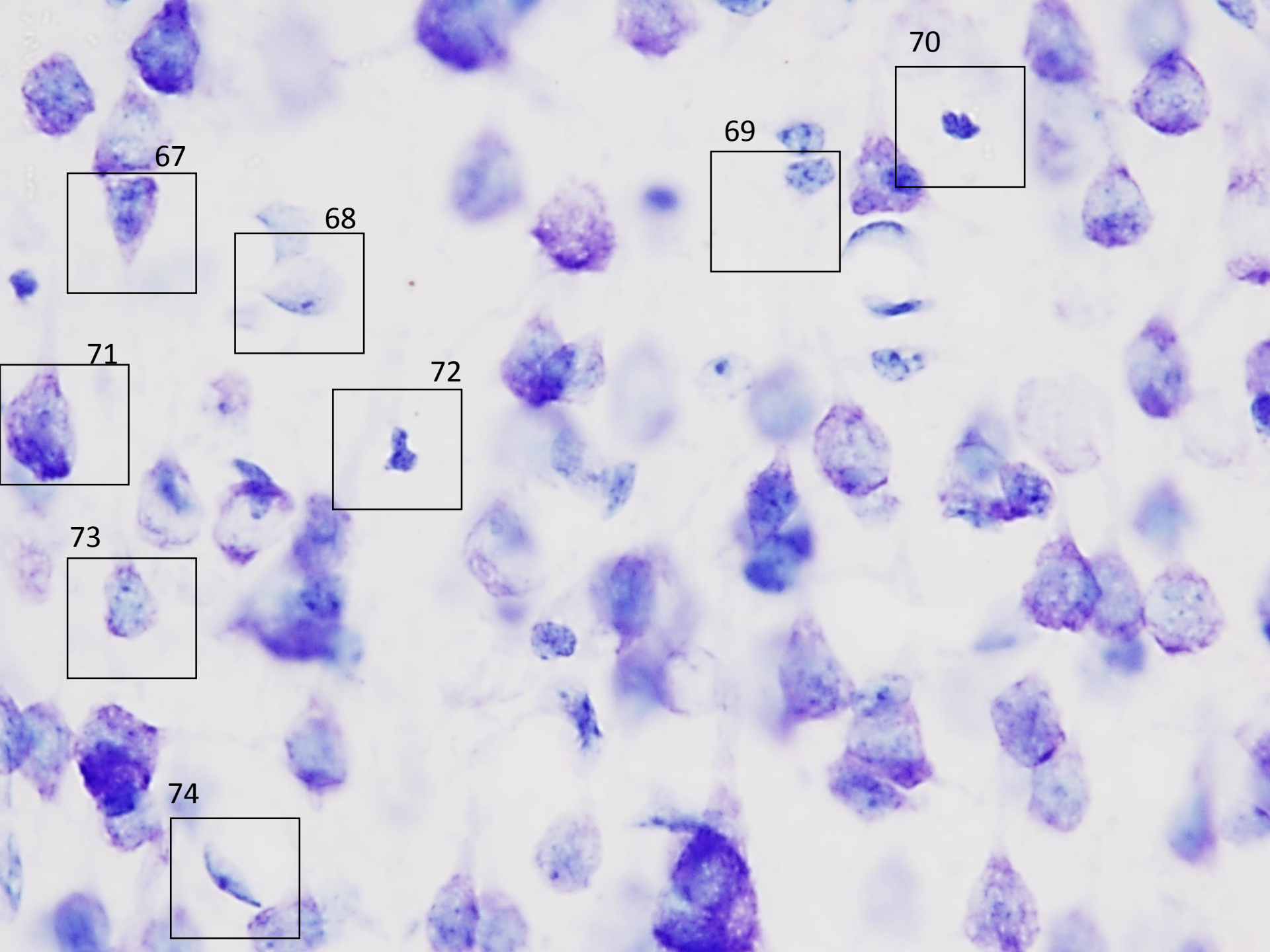
65



66







70

69

67

68

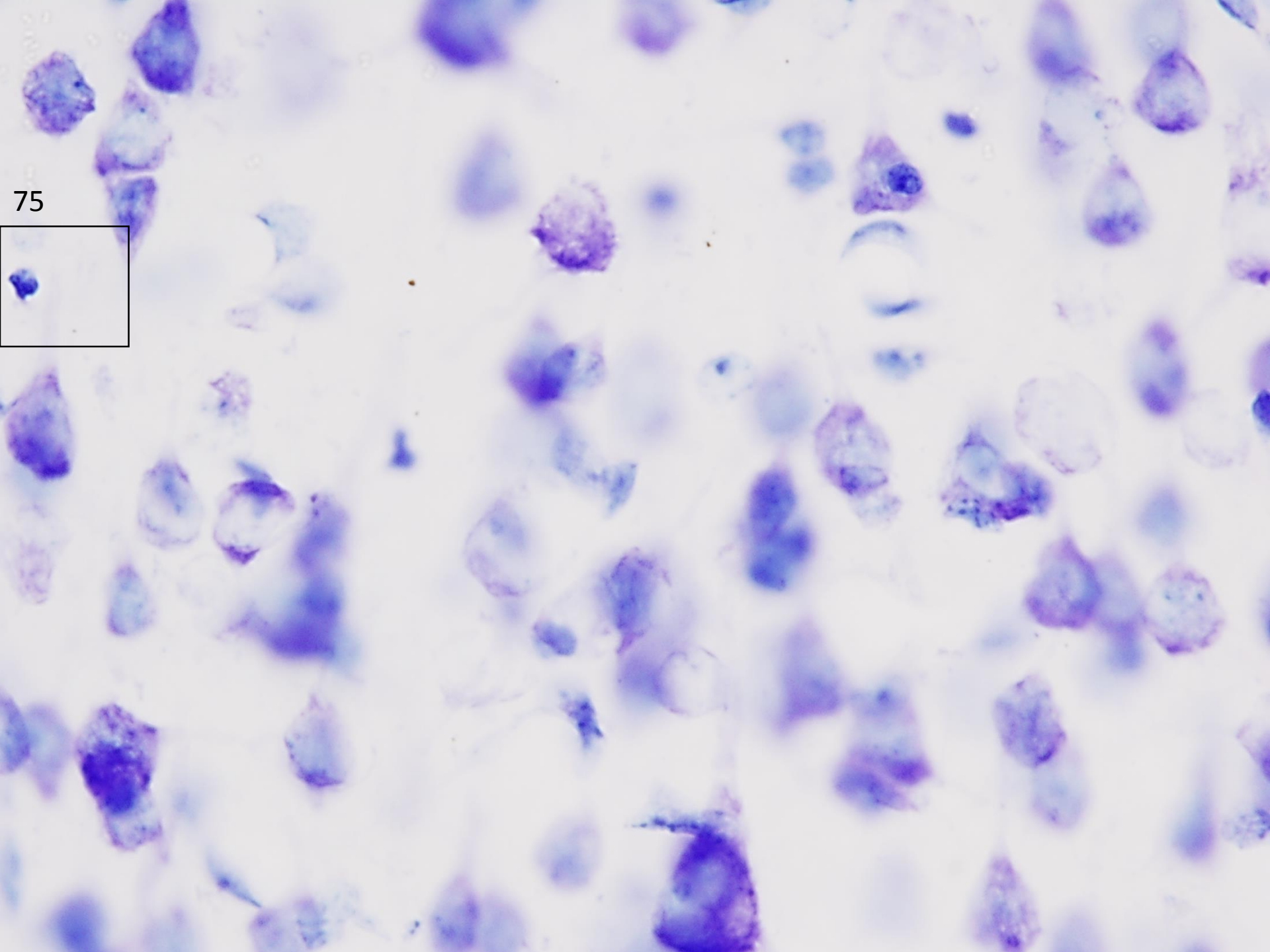
71

72

73

74





75