

Emily J. Hickey, PhD,¹ Nicole A. Stadnick, PhD, MPH,^{2,3} Jocelyn Kuhn, PhD,¹ Sarabeth Broder-Fingert, MD, MPH,¹ Julia Goupil, BS,¹ Andrea Chu, BA,^{1,5}
Jessica Rosenberg, MPH,¹ Marilyn Augustyn, MD,⁴ & Emily Feinberg, ScD, CPNP^{1,5}

¹Boston Medical Center, Boston University School of Medicine, Department of General Academic Pediatrics, ²University of California, San Diego, Department of Psychiatry,

³Child and Adolescent Services Research Center, ⁴Boston Medical Center, Boston University School of Medicine, Division of Developmental and Behavioral Pediatrics, ⁵Boston University School of Public Health

Background

- Significant disparities exist in access to diagnostic and treatment services for children with autism spectrum disorder (ASD)^{1,2,3,4,5,6}
- Family Navigation (FN) was developed in 2012 by a team of ASD, disparity, and service researchers and clinicians to reduce diagnosis disparities and improve care coordination to support families of children at risk for ASD.⁷
- *Core components* can be defined as unique and essential elements of an intervention that are planned and purposeful to its design and delivery.⁸
- To date, no studies have published specific data on what the core components of the intervention are, or how they were conceptualized for ASD.

Research Objective

- To describe and operationalization of the core components of FN in order to facilitate dissemination and implementation in routine care settings.

Methods

- Principal investigator(s), co-investigators, and research staff (n=8) from 4 clinical trials of FN for ASD completed a TIDier checklist between 2017-2018.
- Data from the checklists were analyzed using Intervention Component Analysis to systematically describe FN by:
 - 1)using an inductive approach to describe an intervention
 - 2)making use of investigators' reported experiences

Results

Training and Supervision

1. Training
2. Ongoing Supervision and Case Review
3. Fidelity Monitoring
4. Navigator Checklist*

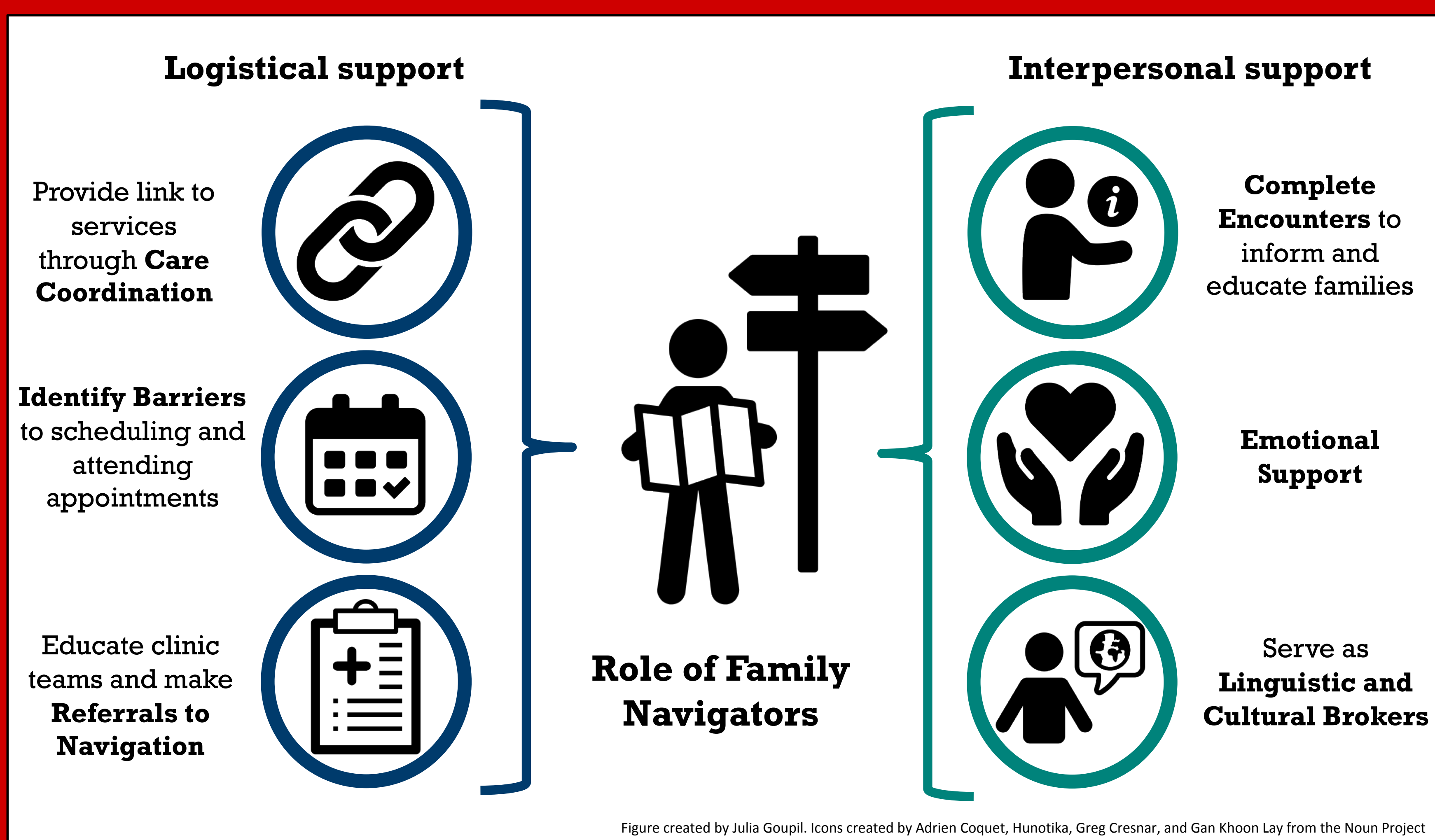
Navigator Activities

1. Referral to Navigation
2. Linguistic and Cultural Brokering
3. Complete Encounters
4. Barrier Identification
5. Emotional Support
6. Care Coordination

Navigator Tools

1. Navigator Workbook
2. Navigator Checklist*

* *Component fell into two domains*



Discussion

- This serves as a blueprint for FN implementation in research (e.g., study design, implementation strategies) and practice (e.g., clinical adaptations).
- We recommend teams looking to use FN adapt core components for their particular context, in line with the widely supported tenet in implementation science regarding the importance of adaptable innovations to maximize “fit” with the service context, service providers, and end-users of the intervention.⁹

Future Directions

- Develop and test quantitative measures of core components that are generalizable
- Determine optimal FN service delivery strategies
- Effectiveness-implementation of FN for children with ASD and co-occurring mental health conditions

References

1. Brookman-Frazee, L. et al. (2009). Involvement of youths with autism spectrum disorders or intellectual disabilities in multiple public service systems. *Journal of Mental Health Research in Intellectual Disabilities*, 2, 201–219.
2. Stadnick, N. et al. (2017). Psychiatric comorbidity in autism spectrum disorder: Correspondence between mental health clinician report and structured parent interview. *Autism: The International Journal of Research and Practice*, 21, 841–851.
3. Durkin, M. S. et al. (2017). Autism spectrum disorder among US children (2002–2010): Socioeconomic, racial, and ethnic disparities. *American Journal of Public Health*, 107, 1818–1826.
4. Lu, W. (2017). Child and adolescent mental disorders and health care disparities: Results from the National Survey of Children's Health, 2011–2012. *Journal of Health Care for the Poor and Underserved*, 28, 988–1011.
5. Mandell, D. S. et al. (2002). Race differences in the age at diagnosis among Medicaid-eligible children with autism. *Journal of the American Academy of Child and Adolescent Psychiatry*, 41, 1447–1453.
6. McGuire, T. G., & Miranda, J. (2008). New evidence regarding racial and ethnic disparities in mental health: Policy implications. *Health Affairs*, 27, 393–403.
7. Feinberg, E. et al. (2016). Reducing disparities in timely autism diagnosis through family navigation: Results from a randomized pilot trial. *Psychiatric Services*, 67, 912–915.
8. Stirman, S. W., et al. (2013). Development of a framework and coding system for modifications and adaptations of evidence-based interventions. *Implementation Science*, 8(1), 65–76.
9. Moullin, J. C., et al. (2019). Systematic review of the Exploration, Preparation, Implementation, Sustainment (EPIS) framework. *Implementation Science*, 14(1), 1–16.

Correspondence and Funding

Emily J. Hickey T32HS10038; K23MH109673
emily.hickey@bmc.org R01MH104355; UA3MC20218